

**Dredging & Reclamation Works Programme Summary
(based on Initial Works Programme Rev. 0)**

ID	Task Name	Duration	Start	2010 2011 2012 2013 2014 2015																							
				Q4	Q1	Q2	Q3	Q4	Q1	Q2	Q3	Q4	Q1	Q2	Q3	Q4	Q1	Q2	Q3	Q4	Q1	Q2	Q3	Q4			
1	HK/2009/02-Marine & Reclamation Works	2008 d	Thu 28/1/10	[Summary bar from Q4 2009 to Q4 2015]																							
2	Contract Commencement	0 d	Thu 28/1/10	[Milestone diamond at start of Q4 2009]																							
3	General	1879 d	Mon 22/2/10	[Summary bar from Q1 2010 to Q4 2015]																							
4	Submission & obtain approval for marine GI	21 d	Mon 22/2/10	[Task bar in Q1 2010]																							
5	Stage 1 Marine GI for reclamation	30 d	Mon 15/3/10	[Task bar in Q1 2010]																							
6	Engineer's Design review for Dredging of WCR1, WCR2 & WCR4	30 d	Mon 22/3/10	[Task bar in Q1 2010]																							
7	Relocation of New Star Ferry Pier	0 d	Tue 18/3/14	[Milestone diamond at start of Q2 2014]																							
8	Demolition of Existing Star Ferry Pier	100 d	Tue 18/3/14	[Task bar in Q2 2014]																							
9	Stage 2 Marine GI for Reclamation	14 d	Tue 18/3/14	[Task bar in Q2 2014]																							
10	Engineer's Design review for Dredging of WCR3	21 d	Tue 25/3/14	[Task bar in Q2 2014]																							
11	Complete Diversion of Hung Hing Road Traffic Back to Original	20 d	Fri 6/2/15	[Task bar in Q1 2015]																							
12	Excavate & remove top of d-wall for permanent seawall construction	50 d	Wed 25/2/15	[Task bar in Q1 2015]																							
13	Submarine Outfall	500 d	Tue 21/9/10	[Summary bar from Q3 2010 to Q4 2011]																							
14	Dredging, Laying and Backfilling of Submarine Outfall Pipe at Sea	500 d	Tue 21/9/10	[Task bar from Q3 2010 to Q4 2011]																							
15	Phase 1 - WCR1	158 d	Wed 21/4/10	[Summary bar from Q1 2010 to Q2 2010]																							
16	Mobilization of plants	1 d	Wed 21/4/10	[Task bar in Q1 2010]																							
17	Seabed dredging	63 d	Wed 21/4/10	[Task bar in Q1 2010]																							
18	Bedding Filling and Permanent seawall (precast cassion)	60 d	Tue 22/6/10	[Task bar in Q2 2010]																							
19	Bulk reclamation	37 d	Fri 20/8/10	[Task bar in Q2 2010]																							
20	Phase 2 - WCR2	149 d	Thu 1/3/12	[Summary bar from Q3 2011 to Q4 2011]																							
21	Mobilization of plants	1 d	Thu 1/3/12	[Task bar in Q3 2011]																							
22	Temp seawall and Seabed dredging	77 d	Thu 1/3/12	[Task bar in Q3 2011]																							
23	Bulk reclamation	73 d	Wed 16/5/12	[Task bar in Q4 2011]																							
24	Phase 3 - TWCR4 & WCR4	98 d	Sat 28/4/12	[Summary bar from Q4 2011 to Q1 2012]																							
25	Mobilization of plants	1 d	Sat 28/4/12	[Task bar in Q4 2011]																							
26	Temp Seawall and Seabed dredging	75 d	Sat 28/4/12	[Task bar in Q4 2011]																							
27	Bulk & temp reclamation	24 d	Wed 11/7/12	[Task bar in Q1 2012]																							
28	Phase 4 - WCR3	294 d	Tue 18/3/14	[Summary bar from Q2 2014 to Q4 2014]																							
29	Mobilization of plants	1 d	Tue 18/3/14	[Task bar in Q2 2014]																							
30	Seabed dredging for Permanent Seawall	112 d	Tue 18/3/14	[Task bar in Q2 2014]																							
31	Backfill and permanent seawall (precast cassion)	108 d	Tue 8/7/14	[Task bar in Q3 2014]																							
32	Bulk reclamation	74 d	Fri 24/10/14	[Task bar in Q4 2014]																							
33	Phase 5 - Construct Permanent Seawall Blocks along curved coastline & Remove TWCR4	105 d	Wed 15/4/15	[Summary bar from Q1 2015 to Q2 2015]																							
34	Mobilization of plants	1 d	Wed 15/4/15	[Task bar in Q1 2015]																							
35	Dredging and Filling for permanent seawall construction	50 d	Wed 15/4/15	[Task bar in Q1 2015]																							
36	Construction of Permanent Seawall Blocks for curved coastline	56 d	Wed 3/6/15	[Task bar in Q2 2015]																							
37	Remove temp seawall and reinstate the location of TWCR4	30 d	Mon 29/6/15	[Task bar in Q2 2015]																							

Project: Reclamation Works Programme
Date: Tue 9/3/10

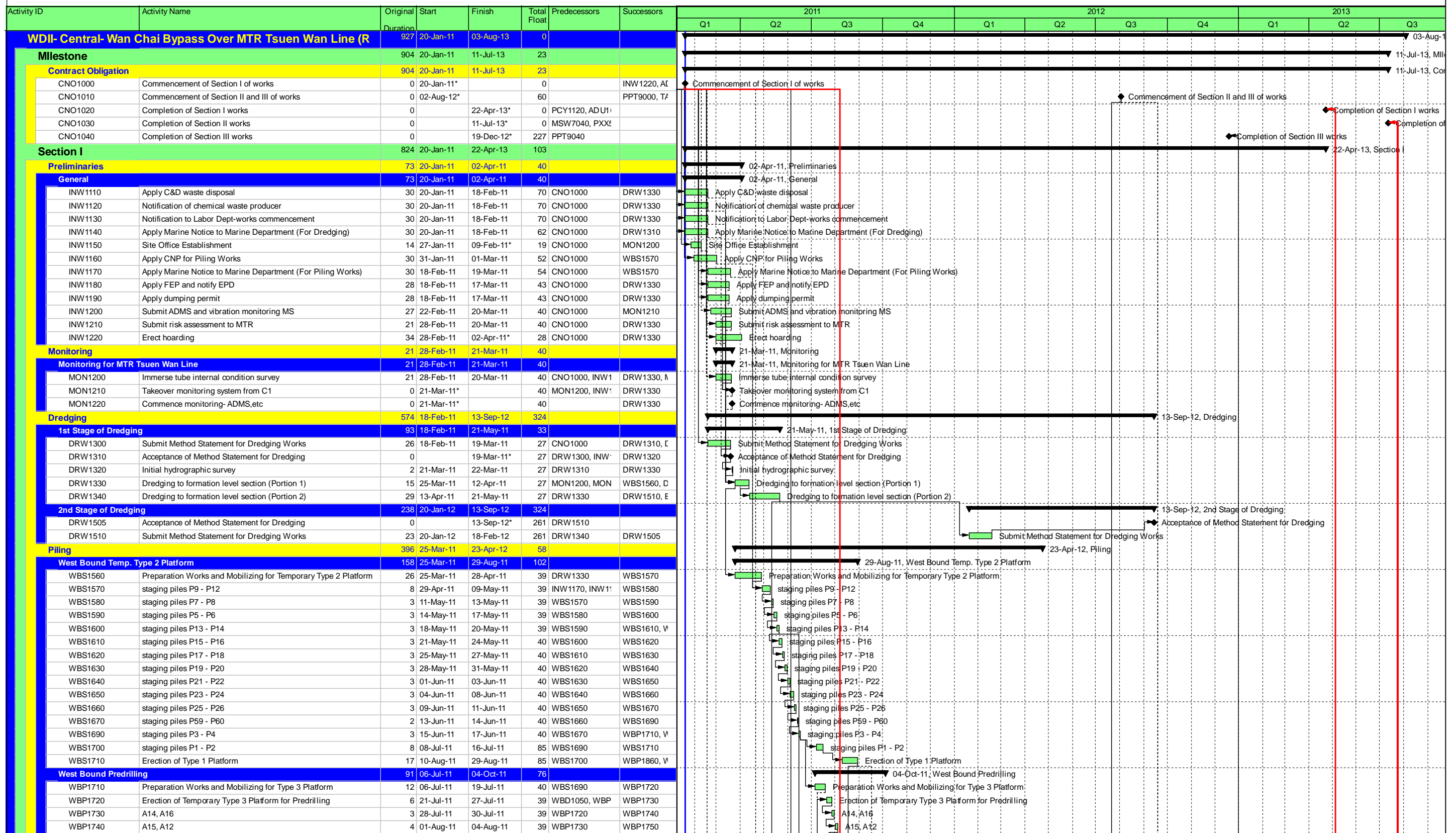
Task		Summary		Rolled Up Progress		Project Summary	
Progress		Rolled Up Task		Split		Group By Summary	
Milestone		Rolled Up Milestone		External Tasks		Deadline	

Activity ID	Cal ID	Activity Description	Orig Dur	Early Start	Early Finish	Year																
						2010	2011	2012	2013	2014	2015	2016	2017									
TCBR1E (TS1 Area)																						
105	1	TCBR1E(TS1)-dredging+rockfill(pre. for seawall)	86	03DEC10*	26FEB11																	
110	1	TCBR1E (TS1)-temporary reclamation	69	28JAN11*	06APR11																	
155	1	TCBR1E (TS1)- removal of temporary reclamation	27	30JAN12*	25FEB12																	
TCBR4																						
100	1	Maintenance dredging for navigation safety for	7	20NOV10*	26NOV10																	
TCBR2 + TCBR3 (TS2 Area)																						
115	1	TCBR2&TCBR3(TS2)- Maintenance dredging for	5	15NOV10*	19NOV10																	
117	1	TCBR2&TCBR3(TS2)-dredge+rockfill seabed	64	16DEC11*	17FEB12																	
120	1	TCBR2&TCBR3(TS2) --temporary reclamation	115	26FEB12*	19JUN12																	
160	1	TCBR2&TCBR3(TS2-removal temporary reclamation	57	18AUG13*	13OCT13																	
TCBR1W (TS4 Area)																						
125	1	TCBR1W(TS4)-dredging+rockfill(pre. for seawall)	40	19DEC10*	27JAN11																	
130	1	TCBR1W(TS4) --temporary reclamation	68	28JAN11	05APR11																	
165	1	TCBR1W(TS4)--removal temporary reclamation	26	27OCT13*	21NOV13																	
TPCWAE																						
135	1	TPCWAE-dredging+rockfill(pre. for seawall)	55	03DEC10*	26JAN11																	
140	1	TPCWAE --temporary reclamation	77	27JAN11	13APR11																	
170	1	TPCWAE--removal temporary reclamation	28	28SEP13*	25OCT13																	
TPCWAW																						
145	1	TPCWAW-dredging+rockfill(pre. for seawall)	47	28OCT13*	13DEC13																	
150	1	TPCWAW --temporary reclamation	83	14DEC13	06MAR14																	
175	1	TPCWAW--removal temporary reclamation	50	02JUL15*	20AUG15																	

 Early Bar
 Progress Bar
 Critical Activity

EP02 CHINA STATE CONSTRUCTION ENGG LTD Sheet 1 of 1
 CONTRACT NO. HY/2009/15: CENTRAL WAN CHAI BYPASS- TUNNEL (CBTS SECTION)

Prepared based on IWP Rev. 0
 Date Prepared: 28 Oct 2010



Activity ID	Activity Name	Original Duration	Start	Finish	Total Float	Predecessors	Successors
WDII- Central- Wan Chai Bypass Over MTR Tsuen Wan Line (R)							
Milestone							
904	20-Jan-11	11-Jul-13	23				
Contract Obligation							
904	20-Jan-11	11-Jul-13	23				
CNO1000	Commencement of Section I of works	0	20-Jan-11*	0		INW1220, AI	
CNO1010	Commencement of Section II and III of works	0	02-Aug-12*	60		PPT9000, T	
CNO1020	Completion of Section I works	0		22-Apr-13*	0	PCY1120, ADU1	
CNO1030	Completion of Section II works	0		11-Jul-13*	0	MSW7040, PXX	
CNO1040	Completion of Section III works	0		19-Dec-12*	227	PPT9040	
Section I							
824	20-Jan-11	22-Apr-13	103				
Preliminaries							
73	20-Jan-11	02-Apr-11	40				
General							
73	20-Jan-11	02-Apr-11	40				
INW1110	Apply C&D waste disposal	30	20-Jan-11	18-Feb-11	70	CNO1000	DRW1330
INW1120	Notification of chemical waste producer	30	20-Jan-11	18-Feb-11	70	CNO1000	DRW1330
INW1130	Notification to Labor Dept-works commencement	30	20-Jan-11	18-Feb-11	70	CNO1000	DRW1330
INW1140	Apply Marine Notice to Marine Department (For Dredging)	30	20-Jan-11	18-Feb-11	62	CNO1000	DRW1310
INW1150	Site Office Establishment	14	27-Jan-11	09-Feb-11*	19	CNO1000	MON1200
INW1160	Apply CNP for Piling Works	30	31-Jan-11	01-Mar-11	52	CNO1000	WBS1570
INW1170	Apply Marine Notice to Marine Department (For Piling Works)	30	18-Feb-11	19-Mar-11	54	CNO1000	WBS1570
INW1180	Apply FEP and notify EPD	28	18-Feb-11	17-Mar-11	43	CNO1000	DRW1330
INW1190	Apply dumping permit	28	18-Feb-11	17-Mar-11	43	CNO1000	DRW1330
INW1200	Submit ADMS and vibration monitoring MS	27	22-Feb-11	20-Mar-11	40	CNO1000	MON1210
INW1210	Submit risk assessment to MTR	21	28-Feb-11	20-Mar-11	40	CNO1000	DRW1330
INW1220	Erect hoarding	34	28-Feb-11	02-Apr-11*	28	CNO1000	DRW1330
Monitoring							
21	28-Feb-11	21-Mar-11	40				
Monitoring for MTR Tsuen Wan Line							
21	28-Feb-11	21-Mar-11	40				
MON1200	Immerse tube internal condition survey	21	28-Feb-11	20-Mar-11	40	CNO1000, INW1	DRW1330, M
MON1210	Takeover monitoring system from C1	0	21-Mar-11*	40	MON1200, INW1	DRW1330	
MON1220	Commence monitoring- ADMS, etc	0	21-Mar-11*	40		DRW1330	
Dredging							
574	18-Feb-11	13-Sep-12	324				
1st Stage of Dredging							
93	18-Feb-11	21-May-11	33				
DRW1300	Submit Method Statement for Dredging Works	26	18-Feb-11	19-Mar-11	27	CNO1000	DRW1310, I
DRW1310	Acceptance of Method Statement for Dredging	0		19-Mar-11*	27	DRW1300, INW1	DRW1320
DRW1320	Initial hydrographic survey	2	21-Mar-11	22-Mar-11	27	DRW1310	DRW1330
DRW1330	Dredging to formation level section (Portion 1)	15	25-Mar-11	12-Apr-11	27	MON1200, MON	WBS1560, D
DRW1340	Dredging to formation level section (Portion 2)	29	13-Apr-11	21-May-11	27	DRW1330	DRW1510, E
2nd Stage of Dredging							
238	20-Jan-12	13-Sep-12	324				
DRW1505	Acceptance of Method Statement for Dredging	0		13-Sep-12*	261	DRW1510	
DRW1510	Submit Method Statement for Dredging Works	23	20-Jan-12	18-Feb-12	261	DRW1340	DRW1505
Piling							
396	25-Mar-11	23-Apr-12	58				
West Bound Temp. Type 2 Platform							
158	25-Mar-11	29-Aug-11	102				
WBS1560	Preparation Works and Mobilizing for Temporary Type 2 Platform	26	25-Mar-11	28-Apr-11	39	DRW1330	WBS1570
WBS1570	staging piles P9 - P12	8	29-Apr-11	09-May-11	39	INW1170, INW1	WBS1580
WBS1580	staging piles P7 - P8	3	11-May-11	13-May-11	39	WBS1570	WBS1590
WBS1590	staging piles P5 - P6	3	14-May-11	17-May-11	39	WBS1580	WBS1600
WBS1600	staging piles P13 - P14	3	18-May-11	20-May-11	39	WBS1590	WBS1610, V
WBS1610	staging piles P15 - P16	3	21-May-11	24-May-11	40	WBS1600	WBS1620
WBS1620	staging piles P17 - P18	3	25-May-11	27-May-11	40	WBS1610	WBS1630
WBS1630	staging piles P19 - P20	3	28-May-11	31-May-11	40	WBS1620	WBS1640
WBS1640	staging piles P21 - P22	3	01-Jun-11	03-Jun-11	40	WBS1630	WBS1650
WBS1650	staging piles P23 - P24	3	04-Jun-11	08-Jun-11	40	WBS1640	WBS1660
WBS1660	staging piles P25 - P26	3	09-Jun-11	11-Jun-11	40	WBS1650	WBS1670
WBS1670	staging piles P59 - P60	2	13-Jun-11	14-Jun-11	40	WBS1660	WBS1690
WBS1690	staging piles P3 - P4	3	15-Jun-11	17-Jun-11	40	WBS1670	WBP1710, V
WBS1700	staging piles P1 - P2	8	08-Jul-11	16-Jul-11	85	WBS1690	WBS1710
WBS1710	Erection of Type 1 Platform	17	10-Aug-11	29-Aug-11	85	WBS1700	WBP1860, V
West Bound Predrilling							
91	06-Jul-11	04-Oct-11	76				
WBP1710	Preparation Works and Mobilizing for Type 3 Platform	12	06-Jul-11	19-Jul-11	40	WBS1690	WBP1720
WBP1720	Erection of Temporary Type 3 Platform for Predrilling	6	21-Jul-11	27-Jul-11	39	WBD1050, WBP	WBP1730
WBP1730	A14, A16	3	28-Jul-11	30-Jul-11	39	WBP1720	WBP1740
WBP1740	A15, A12	4	01-Aug-11	04-Aug-11	39	WBP1730	WBP1750

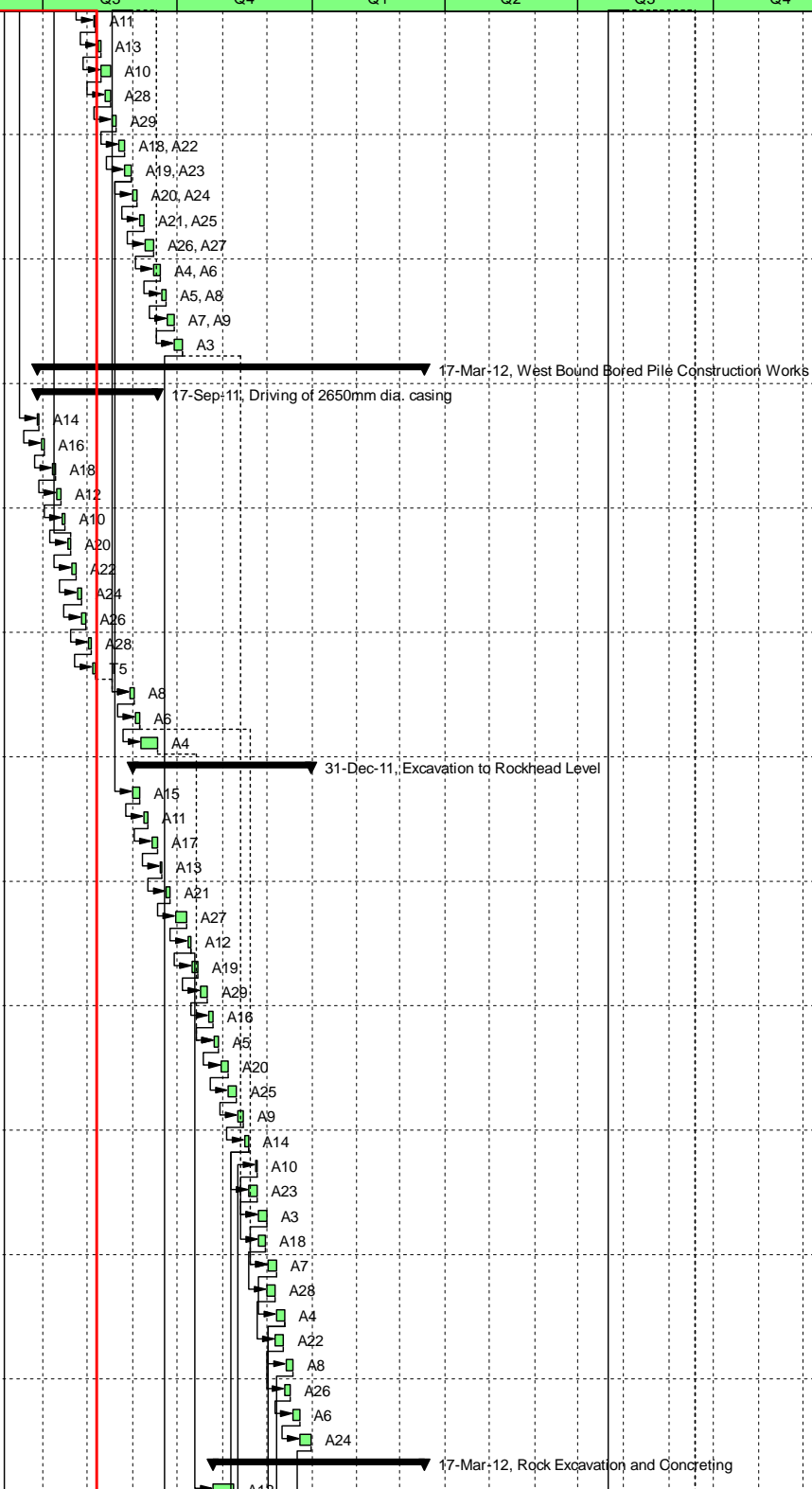
Contract No.: HK/2010/06
Wan Chai Development Phase II-
Central-Wan Chai Bypass over MTR Tuen Wan Line
 (Works Programme - Rev. L)

金門 - 利達聯營
Gammon - Leader Joint Venture

利達 LEADER

Legend	Date	Revision	Ch...	Approved
Actual Work	31-May-12	Rev. E	MF	KT
Remaining Work	23-Jun-12	Rev. F	MF	KT
Critical Remaining ...	19-Jul-12	Rev. G	MF	KT
Milestone	14-Aug-12	Rev. H	MF	KT
Summary	19-Sep-12	Rev. I	MF	KT
	21-Nov-12	Rev. J	MF	KT
	19-Feb-13	Rev. K	MF	KT
	05-Mar-13	Rev. L	MF	KT

Activity ID	Activity Name	Original Duration	Start	Finish	Total Float	Predecessors	Successors	2011				2012				2013			
								Q1	Q2	Q3	Q4	Q1	Q2	Q3	Q4	Q1	Q2	Q3	
WBP1750	A11	2	05-Aug-11	06-Aug-11	39	WBP1740	WBP1755												
WBP1755	A13	2	08-Aug-11	09-Aug-11	39	WBP1750	WBP1760												
WBP1760	A10	6	10-Aug-11	16-Aug-11	39	WBP1755	WBP1765												
WBP1765	A28	3	13-Aug-11	16-Aug-11	39	WBP1760	WBP1770												
WBP1770	A29	4	17-Aug-11	20-Aug-11	39	WBP1765	WBP1780												
WBP1780	A18, A22	4	22-Aug-11	25-Aug-11	39	WBP1770	WBP1790												
WBP1790	A19, A23	4	26-Aug-11	30-Aug-11	39	WBP1780	WPP1400, W												
WBP1800	A20, A24	4	31-Aug-11	03-Sep-11	64	WBP1790	WBP1810												
WBP1810	A21, A25	4	05-Sep-11	08-Sep-11	64	WBP1800	WBP1820												
WBP1820	A26, A27	4	09-Sep-11	14-Sep-11	64	WBP1810	WBP1830												
WBP1830	A4, A6	4	15-Sep-11	19-Sep-11	64	WBP1820	WBP1840												
WBP1840	A5, A8	4	20-Sep-11	23-Sep-11	64	WBP1830	WBP1850												
WBP1850	A7, A9	4	24-Sep-11	28-Sep-11	64	WBP1840	WBP1860												
WBP1860	A3	4	29-Sep-11	04-Oct-11	64	WBP1850, WBS	EBP2610, W												
West Bound Bored Pile Construction Works		265	27-Jun-11	17-Mar-12	72														
Driving of 2650mm dia. casing		83	27-Jun-11	17-Sep-11	104														
WBD1000	A14	2	27-Jun-11	28-Jun-11	39	WBS1600	WBD1010												
WBD1010	A16	2	30-Jun-11	02-Jul-11	39	WBD1000	WBD1020												
WBD1020	A18	2	08-Jul-11	09-Jul-11	39	WBD1010	WBD1030												
WBD1030	A12	3	11-Jul-11	13-Jul-11	39	WBD1020	WBD1040												
WBD1040	A10	3	14-Jul-11	16-Jul-11	39	WBD1030	WBD1050												
WBD1050	A20	3	18-Jul-11	20-Jul-11	39	WBD1040	WBP1720, V												
WBD1060	A22	3	21-Jul-11	23-Jul-11	104	WBD1050	WBD1070												
WBD1070	A24	3	25-Jul-11	27-Jul-11	104	WBD1060	WBD1080												
WBD1080	A26	3	28-Jul-11	30-Jul-11	104	WBD1070	WBD1090												
WBD1090	A28	3	01-Aug-11	03-Aug-11	104	WBD1080	WBD1100												
WBD1100	T5	3	04-Aug-11	06-Aug-11	104	WBD1090	WBD1110												
WBD1110	A8	3	30-Aug-11	01-Sep-11	85	WBD1100, WBS	WBD1120												
WBD1120	A6	3	02-Sep-11	05-Sep-11	85	WBD1110	WBD1130, V												
WBD1130	A4	10	06-Sep-11	17-Sep-11	85	WBD1120	WPP1500												
Excavation to Rockhead Level		123	31-Aug-11	31-Dec-11	86														
WPP1400	A15	5	31-Aug-11	05-Sep-11	39	WBP1790	WPP1410												
WPP1410	A11	3	08-Sep-11	10-Sep-11	39	WPP1400	WPP1420												
WPP1420	A17	4	14-Sep-11	17-Sep-11	39	WPP1410	WPP1430												
WPP1430	A13	2	19-Sep-11	20-Sep-11	39	WPP1420	WPP1440												
WPP1440	A21	3	23-Sep-11	26-Sep-11	39	WPP1430	WPP1450												
WPP1450	A27	5	30-Sep-11	07-Oct-11	39	WPP1440	WPP1460												
WPP1460	A12	2	08-Oct-11	10-Oct-11	39	WPP1450	WBC2010, V												
WPP1470	A19	4	11-Oct-11	14-Oct-11	55	WPP1460	WPP1480												
WPP1480	A29	5	17-Oct-11	21-Oct-11	55	WPP1470	WPP1490												
WPP1490	A16	3	22-Oct-11	25-Oct-11	55	WPP1480	WPP1500												
WPP1500	A5	4	26-Oct-11	29-Oct-11	55	WPP1490, WBD	WPP1510												
WPP1510	A20	5	31-Oct-11	04-Nov-11	55	WPP1500	WPP1520												
WPP1520	A25	5	05-Nov-11	10-Nov-11	55	WPP1510	WPP1530												
WPP1530	A9	4	11-Nov-11	15-Nov-11	55	WPP1520	WPP1540												
WPP1540	A14	3	16-Nov-11	18-Nov-11	55	WPP1530	WPP1560, V												
WPP1550	A10	2	23-Nov-11	24-Nov-11	55	EPP1480	WPP1570												
WPP1560	A23	5	19-Nov-11	24-Nov-11	69	WPP1540	WPP1580												
WPP1570	A3	6	25-Nov-11	01-Dec-11	55	WBP1860, WPP	WPP1590												
WPP1580	A18	5	25-Nov-11	30-Nov-11	69	WPP1560	WPP1600												
WPP1590	A7	5	02-Dec-11	07-Dec-11	55	WPP1570, WBD	WPP1610												
WPP1600	A28	5	01-Dec-11	06-Dec-11	69	WPP1580	WPP1620												
WPP1610	A4	5	08-Dec-11	13-Dec-11	55	WPP1590	WPP1630, V												
WPP1620	A22	5	07-Dec-11	12-Dec-11	69	WPP1600	WPP1640												
WPP1630	A8	5	14-Dec-11	19-Dec-11	57	WPP1610	EPP1490												
WPP1640	A26	5	13-Dec-11	17-Dec-11	69	WPP1620	WPP1650												
WPP1650	A6	5	19-Dec-11	23-Dec-11	69	WPP1640	WPP1660												
WPP1660	A24	5	24-Dec-11	31-Dec-11	69	WPP1650	EPP1510												
Rock Excavation and Concreting		145	25-Oct-11	17-Mar-12	72														
WBC2010	A12	13	25-Oct-11	08-Nov-11	39	WPP1460	WBC2040												

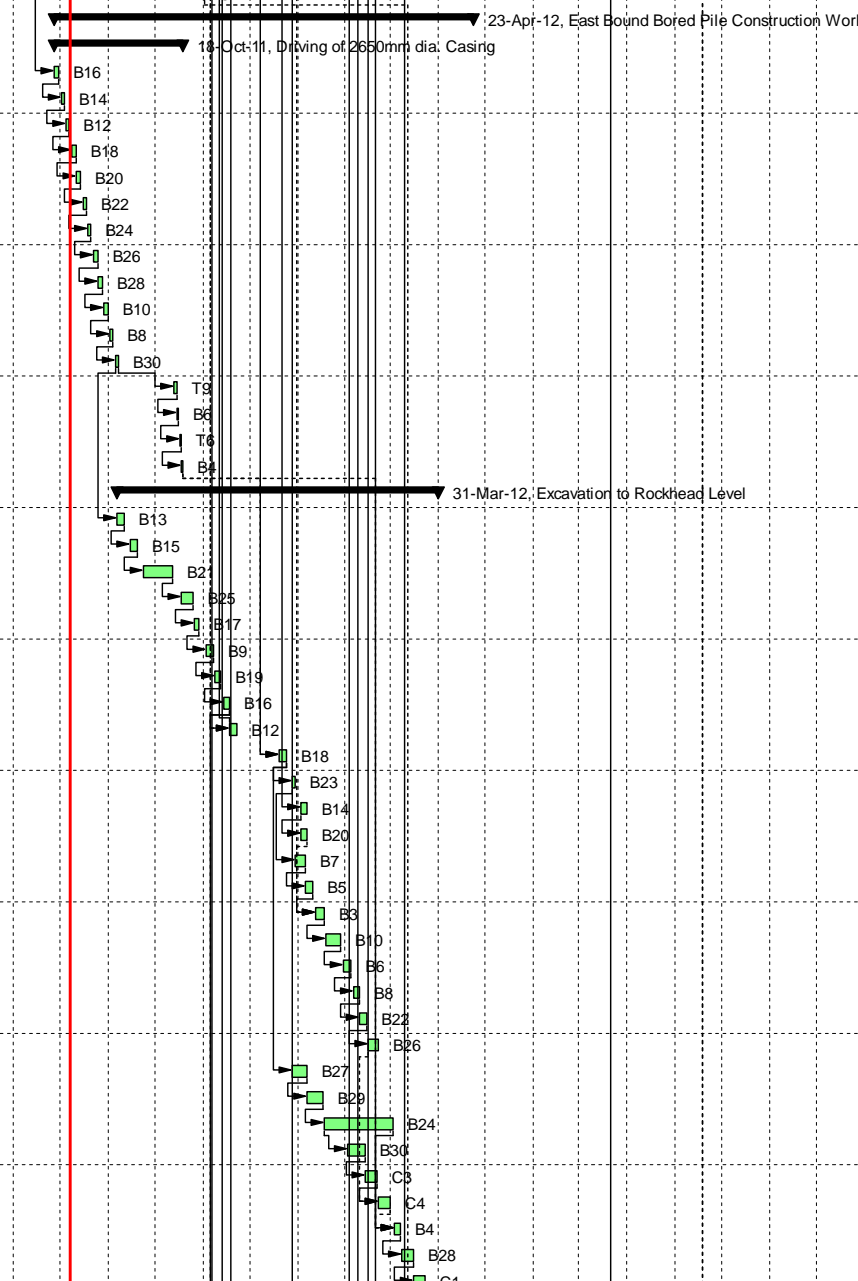


 Actual Work	Date	Revision	Ch...	Approved
 Remaining Work	31-May-12	Rev. E	MF	KT
 Critical Remaining ...	23-Jun-12	Rev. F	MF	KT
◆ Milestone	19-Jul-12	Rev. G	MF	KT
▶ Summary	14-Aug-12	Rev. H	MF	KT
	19-Sep-12	Rev. I	MF	KT
	21-Nov-12	Rev. J	MF	KT
	19-Feb-13	Rev. K	MF	KT
	05-Mar-13	Rev. L	MF	KT

Contract No.: HK/2010/06
Wan Chai Development Phase II-
Central-Wan Chai Bypass over MTR Tuen Wan Line
 (Works Programme - Rev. L)



Activity ID	Activity Name	Original Duration	Start	Finish	Total Float	Predecessors	Successors	2011				2012				2013				
								Q1	Q2	Q3	Q4	Q1	Q2	Q3	Q4	Q1	Q2	Q3		
EBP2550	B8	6	18-Oct-11	24-Oct-11	58	EBP2540	EBP2560													
EBP2560	B7	2	25-Oct-11	26-Oct-11	58	EBP2550	EBP2570													
EBP2570	B6	4	27-Oct-11	31-Oct-11	58	EBP2560	EBP2580													
EBP2580	B5	2	01-Nov-11	02-Nov-11	58	EBS2390, EBP2570	EBP2590													
EBP2590	B4	3	03-Nov-11	05-Nov-11	58	EBP2580	EBP2600													
EBP2600	B3	6	08-Nov-11	14-Nov-11	58	EBP2590	EPP1550, EF													
EBP2610	B27	3	04-Oct-11	07-Oct-11	64	WBP1860	EBP2620													
EBP2620	C4	6	08-Oct-11	14-Oct-11	64	EBP2610	EBP2630													
EBP2630	C3	6	15-Oct-11	21-Oct-11	64	EBP2620	EBP2640													
EBP2640	C1	4	22-Oct-11	26-Oct-11	64	EBP2630	EBP2650													
EBP2650	C2	5	27-Oct-11	01-Nov-11	64	EBP2640	EPP1700													
East Bound Bored Pile Construction Work			271	28-Jul-11	23-Apr-12	58														
Driving of 2650mm dia. Casing			83	28-Jul-11	18-Oct-11	71														
EBD1010	B16	3	28-Jul-11	30-Jul-11	27	EBS2340	EBD1020													
EBD1020	B14	3	01-Aug-11	03-Aug-11	27	EBD1010	EBD1030													
EBD1030	B12	3	04-Aug-11	06-Aug-11	27	EBD1020	EBD1040													
EBD1040	B18	3	08-Aug-11	10-Aug-11	27	EBD1030	EBD1050													
EBD1050	B20	3	11-Aug-11	13-Aug-11	27	EBD1040	EBD1060													
EBD1060	B22	3	15-Aug-11	17-Aug-11	27	EBD1050	EBD1070													
EBD1070	B24	3	18-Aug-11	20-Aug-11	27	EBD1060	EBD1080													
EBD1080	B26	3	22-Aug-11	24-Aug-11	27	EBD1070	EBD1090													
EBD1090	B28	3	25-Aug-11	27-Aug-11	27	EBD1080	EBD1100													
EBD1100	B10	3	29-Aug-11	31-Aug-11	27	EBD1090	EBD1110													
EBD1110	B8	3	01-Sep-11	03-Sep-11	27	EBD1100	EBD1130													
EBD1130	B30	3	05-Sep-11	07-Sep-11	27	EBD1110	EPP1400, EF													
EBD1140	T9	2	13-Oct-11	14-Oct-11	59	EBD1130	EBD1150													
EBD1150	B6	1	15-Oct-11	15-Oct-11	59	EBD1140	EBD1155													
EBD1155	T6	1	17-Oct-11	17-Oct-11	59	EBD1150	EBD1160													
EBD1160	B4	1	18-Oct-11	18-Oct-11	59	EBD1155	EPP1490, EF													
Excavation to Rockhead Level			208	06-Sep-11	31-Mar-12	74														
EPP1400	B13	5	06-Sep-11	10-Sep-11	27	EBD1130	EPP1410													
EPP1410	B15	4	15-Sep-11	19-Sep-11	27	EPP1400	EPP1420													
EPP1420	B21	15	23-Sep-11	12-Oct-11	27	EPP1410	EPP1430													
EPP1430	B25	7	18-Oct-11	25-Oct-11	27	EPP1420	EPP1440													
EPP1440	B17	4	26-Oct-11	29-Oct-11	27	EPP1430	EPP1450													
EPP1450	B9	4	03-Nov-11	07-Nov-11	27	EPP1440	EPP1460													
EPP1460	B19	5	08-Nov-11	12-Nov-11	27	EPP1450	EPP1470													
EPP1470	B16	4	14-Nov-11	17-Nov-11	27	EPP1460	EBC2000, EF													
EPP1480	B12	4	18-Nov-11	22-Nov-11	55	EBP2600, EPP1470	WPP1550													
EPP1490	B18	5	20-Dec-11	24-Dec-11	57	EBD1160, WPP1490	EPP1500, EF													
EPP1500	B23	3	28-Dec-11	30-Dec-11	65	EPP1490	EPP1530													
EPP1510	B14	4	03-Jan-12	06-Jan-12	69	WPP1660	EPP1520													
EPP1520	B20	4	03-Jan-12	06-Jan-12	69	EPP1510	EPP1550													
EPP1530	B7	5	30-Dec-11	05-Jan-12	65	EPP1500	EPP1540													
EPP1540	B5	4	06-Jan-12	10-Jan-12	65	EPP1530	EPP1550													
EPP1550	B3	6	12-Jan-12	18-Jan-12	65	EPP1540, EPP1530	EPP1560													
EPP1560	B10	6	19-Jan-12	28-Jan-12	65	EPP1550	EPP1570													
EPP1570	B6	6	30-Jan-12	04-Feb-12	65	EPP1560	EPP1580													
EPP1580	B8	4	06-Feb-12	09-Feb-12	65	EPP1570	EPP1590													
EPP1590	B22	4	10-Feb-12	14-Feb-12	65	EPP1580	EPP1600													
EPP1600	B26	7	15-Feb-12	22-Feb-12	65	EPP1590	EPP1662													
EPP1610	B27	8	28-Dec-11	06-Jan-12	57	EPP1490	EPP1620													
EPP1620	B29	9	07-Jan-12	17-Jan-12	57	EPP1610	EPP1630													
EPP1630	B24	36	18-Jan-12	02-Mar-12	57	EPP1620	EPP1640, EF													
EPP1640	B30	10	02-Feb-12	13-Feb-12	59	EPP1630	EPP1650													
EPP1650	C3	7	14-Feb-12	21-Feb-12	59	EPP1640	EPP1662													
EPP1662	C4	7	22-Feb-12	29-Feb-12	59	EPP1650, EPP1640	EPP1670													
EPP1670	B4	4	03-Mar-12	07-Mar-12	57	EBD1160, EPP1662	EPP1680													
EPP1680	B28	7	08-Mar-12	15-Mar-12	57	EPP1670	EPP1690													
EPP1690	C1	7	16-Mar-12	23-Mar-12	57	EPP1680	EPP1700													

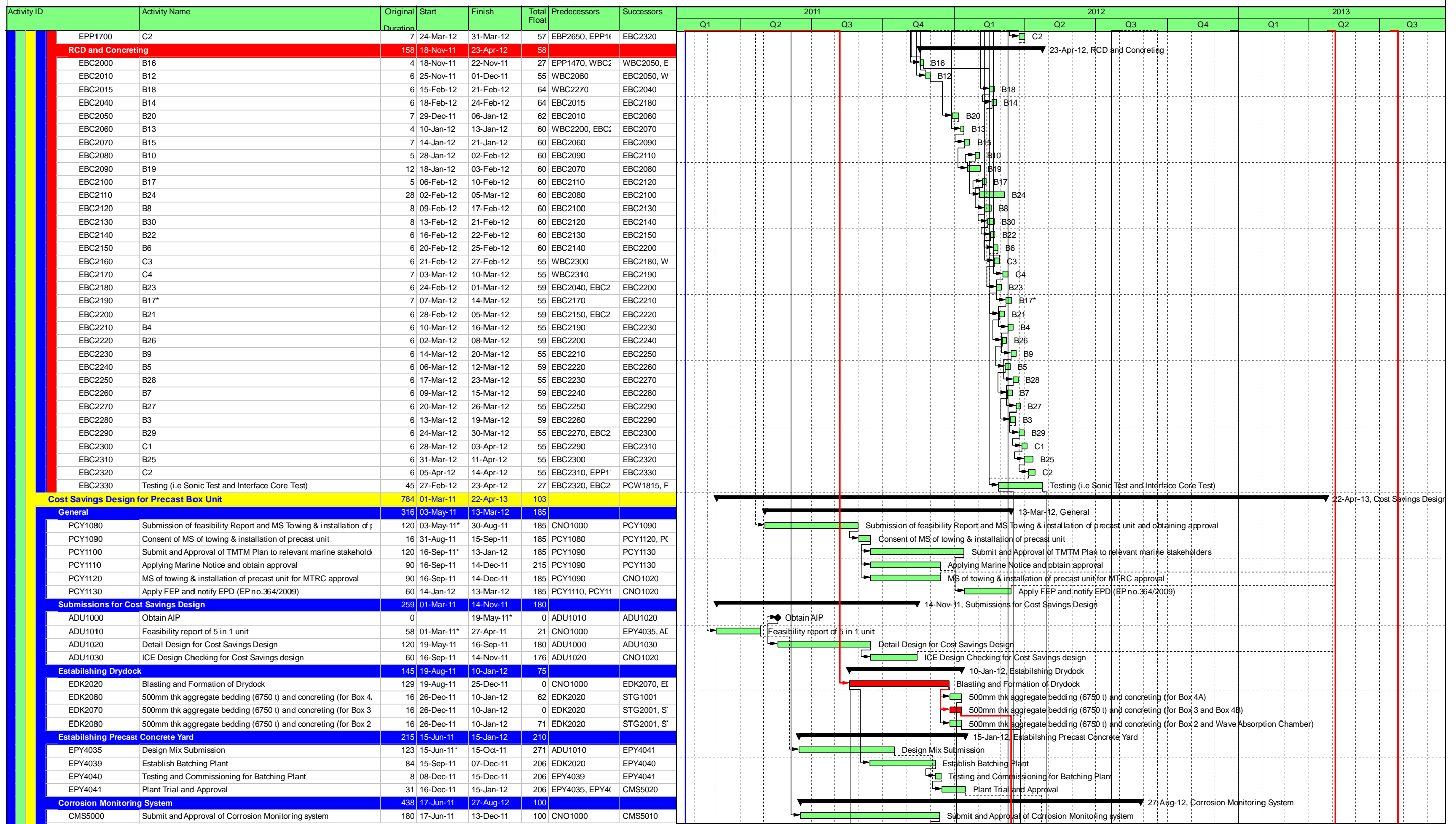


	Date	Revision	Ch...	Approved
Actual Work	31-May-12	Rev. E	MF	KT
Remaining Work	23-Jun-12	Rev. F	MF	KT
Critical Remaining ...	19-Jul-12	Rev. G	MF	KT
Milestone	14-Aug-12	Rev. H	MF	KT
Summary	19-Sep-12	Rev. I	MF	KT
	21-Nov-12	Rev. J	MF	KT
	19-Feb-13	Rev. K	MF	KT
	05-Mar-13	Rev. L	MF	KT

Contract No.: HK/2010/06
Wan Chai Development Phase II-
Central-Wan Chai Bypass over MTR Tuen Wan Line
 (Works Programme - Rev. L)

金門 - 利達聯營

Gammon - Leader Joint Venture








	Date	Revision	Ch...	Approved
Actual Work	31-May-12	Rev. E	MF	KT
Remaining Work	23-Jun-12	Rev. F	MF	KT
Critical Remaining ...	19-Jul-12	Rev. G	MF	KT
Milestone	14-Aug-12	Rev. H	MF	KT
Summary	19-Sep-12	Rev. I	MF	KT
	21-Nov-12	Rev. J	MF	KT
	19-Feb-13	Rev. K	MF	KT
	05-Mar-13	Rev. L	MF	KT

Contract No.: HK/2010/06
Wan Chai Development Phase II-
Central-Wan Chai Bypass over MTR Tuen Wan Line
 (Works Programme - Rev. L)



Activity ID	Activity Name	Original Duration	Start	Finish	Total Float	Predecessors	Successors	2011			2012				2013				
								Q1	Q2	Q3	Q4	Q1	Q2	Q3	Q4	Q1	Q2	Q3	
STG7003	Formwork Erection	17	25-Jun-12	11-Jul-12	97	STG7002	STG7004												
STG7004	Concreting	2	12-Jul-12	13-Jul-12	97	STG7003	STG7005												
STG7005	Formwork Removal	6	16-Jul-12	21-Jul-12	97	STG7004	STG1210												
Stage 8		32	23-Jun-12	24-Jul-12	62														
First Part of Wall 48A, 49A(Side Wall) & 43A(Double Wall) of Box 4A and 43B		32	23-Jun-12	24-Jul-12	62														
STG8001	Setting Out	20	23-Jun-12	12-Jul-12	62	STG4005	STG8002												
STG8002	Rebar Fixing	20	25-Jun-12	14-Jul-12	62	STG8001	STG8003												
STG8003	Formwork Erection	22	27-Jun-12	18-Jul-12	62	STG8002	STG8004												
STG8004	Concreting	2	19-Jul-12	20-Jul-12	62	STG8003	STG8005												
STG8005	Formwork Removal	3	22-Jul-12	24-Jul-12	62	STG8004	STG1410												
Stage 9		27	21-Jul-12	16-Aug-12	111														
First Part of Wall 46 & 48B of (Box 4B)		27	21-Jul-12	16-Aug-12	111														
STG9001	Setting Out	15	21-Jul-12	04-Aug-12	111	STG2004	STG9002												
STG9002	Rebar Fixing	13	23-Jul-12	04-Aug-12	111	STG9001	STG9003												
STG9003	Formwork Erection	13	25-Jul-12	06-Aug-12	111	STG9002	STG9004												
STG9004	Concreting	2	07-Aug-12	08-Aug-12	111	STG9003	STG9005												
STG9005	Formwork Removal	6	11-Aug-12	16-Aug-12	111	STG9004	PPC6000												
Stage 10		22	26-Jul-12	16-Aug-12	74														
First Part of Wall 47 (Internal Wall) (WAC)		22	26-Jul-12	16-Aug-12	74														
STG1010	Setting Out	15	26-Jul-12	09-Aug-12	74	STG2004	STG1020												
STG1020	Rebar Fixing	12	28-Jul-12	08-Aug-12	74	STG1010	STG1030												
STG1030	Formwork Erection	12	30-Jul-12	10-Aug-12	74	STG1020	STG1040												
STG1040	Concreting	1	11-Aug-12	11-Aug-12	74	STG1030	STG1050												
STG1050	Formwork Removal	3	14-Aug-12	16-Aug-12	74	STG1040	STG1510												
Stage 10A		27	21-Jul-12	16-Aug-12	74														
Intermediate Slab (Panel Slot Slab) and First Part of Wall 53, 54 & 55 of WAC		27	21-Jul-12	16-Aug-12	74														
SGA1010	Setting Out	14	21-Jul-12	03-Aug-12	0	STG6004	SGA1020												
SGA1020	Falsework Erection	12	23-Jul-12	03-Aug-12	0	SGA1010	SGA1030												
SGA1030	Formwork Erection	11	25-Jul-12	04-Aug-12	0	SGA1020	SGA1040												
SGA1040	Rebar Fixing	11	27-Jul-12	06-Aug-12	0	SGA1030	SGA1050												
SGA1050	Concreting	1	07-Aug-12	07-Aug-12	0	SGA1040	STG1310, S												
SGA1060	Formwork and Falsework Removal	5	12-Aug-12	16-Aug-12	74	SGA1050	STG1510												
Stage 11		29	02-Aug-12	30-Aug-12	97														
First Part of Wall 44, 45A, 45B, 49B of (Box 4B)		29	02-Aug-12	30-Aug-12	97														
STG1110	Setting Out	15	02-Aug-12	16-Aug-12	0	STG2006	STG1120												
STG1120	Rebar Fixing	13	04-Aug-12	16-Aug-12	0	STG1110	STG1130												
STG1130	Formwork Erection	13	06-Aug-12	18-Aug-12	0	STG1120	STG1140												
STG1140	Concreting	1	19-Aug-12	19-Aug-12	0	STG1130	STG1610, S												
STG1150	Formwork Removal	8	23-Aug-12	30-Aug-12	97	STG1140	PPC6000												
Stage 12		42	20-Jul-12	30-Aug-12	97														
Top Slab of Box 2 & 3		42	20-Jul-12	30-Aug-12	97														
STG1210	Setting Out	19	20-Jul-12	07-Aug-12	97	STG7005	STG1220												
STG1220	Falsework Erection	17	22-Jul-12	07-Aug-12	97	STG1210	STG1230												
STG1230	Formwork Erection	17	24-Jul-12	09-Aug-12	97	STG1220	STG1240												
STG1240	Rebar Fixing	17	26-Jul-12	11-Aug-12	97	STG1230	STG1250												
STG1250	Concreting	2	12-Aug-12	13-Aug-12	97	STG1240	STG1260												
STG1260	Formwork and Falsework Removal	8	23-Aug-12	30-Aug-12	97	STG1250	PPC6000												
Stage 13		23	27-Sep-12	19-Oct-12	0														
Wall 52 (lower) -5.25 to 0.5 + Lower Roof Slab		23	27-Sep-12	19-Oct-12	0														
STG1310	Setting Out	15	27-Sep-12	11-Oct-12	0	STG6005, SGA1	STG1320												
STG1320	Rebar Fixing	11	29-Sep-12	09-Oct-12	0	STG1310	STG1330												
STG1330	Formwork Erection	11	01-Oct-12	11-Oct-12	0	STG1320	STG1340												
STG1340	Concreting	1	12-Oct-12	12-Oct-12	0	STG1330	STG1350												
STG1350	Formwork Removal	2	18-Oct-12	19-Oct-12	0	STG1340	PPC6000, S												
Stage 14		32	03-Sep-12	04-Oct-12	62														
Top Slab of Box 4A		32	03-Sep-12	04-Oct-12	62														
STG1410	Setting Out	11	03-Sep-12	13-Sep-12	62	STG8005	STG1420												
STG1420	Falsework Erection	11	06-Sep-12	16-Sep-12	62	STG1410	STG1430												
STG1430	Formwork Erection	10	08-Sep-12	17-Sep-12	62	STG1420	STG1440												
STG1440	Rebar Fixing	10	10-Sep-12	19-Sep-12	62	STG1430	STG1450												

	Actual Work		
	Remaining Work		
	Critical Remaining ...		
	Milestone		
	Summary		
Date	Revision	Ch...	Approved
31-May-12	Rev. E	MF	KT
23-Jun-12	Rev. F	MF	KT
19-Jul-12	Rev. G	MF	KT
14-Aug-12	Rev. H	MF	KT
19-Sep-12	Rev. I	MF	KT
21-Nov-12	Rev. J	MF	KT
19-Feb-13	Rev. K	MF	KT
05-Mar-13	Rev. L	MF	KT

Contract No.: HK/2010/06
Wan Chai Development Phase II-
Central-Wan Chai Bypass over MTR Tuen Wan Line
 (Works Programme - Rev. L)

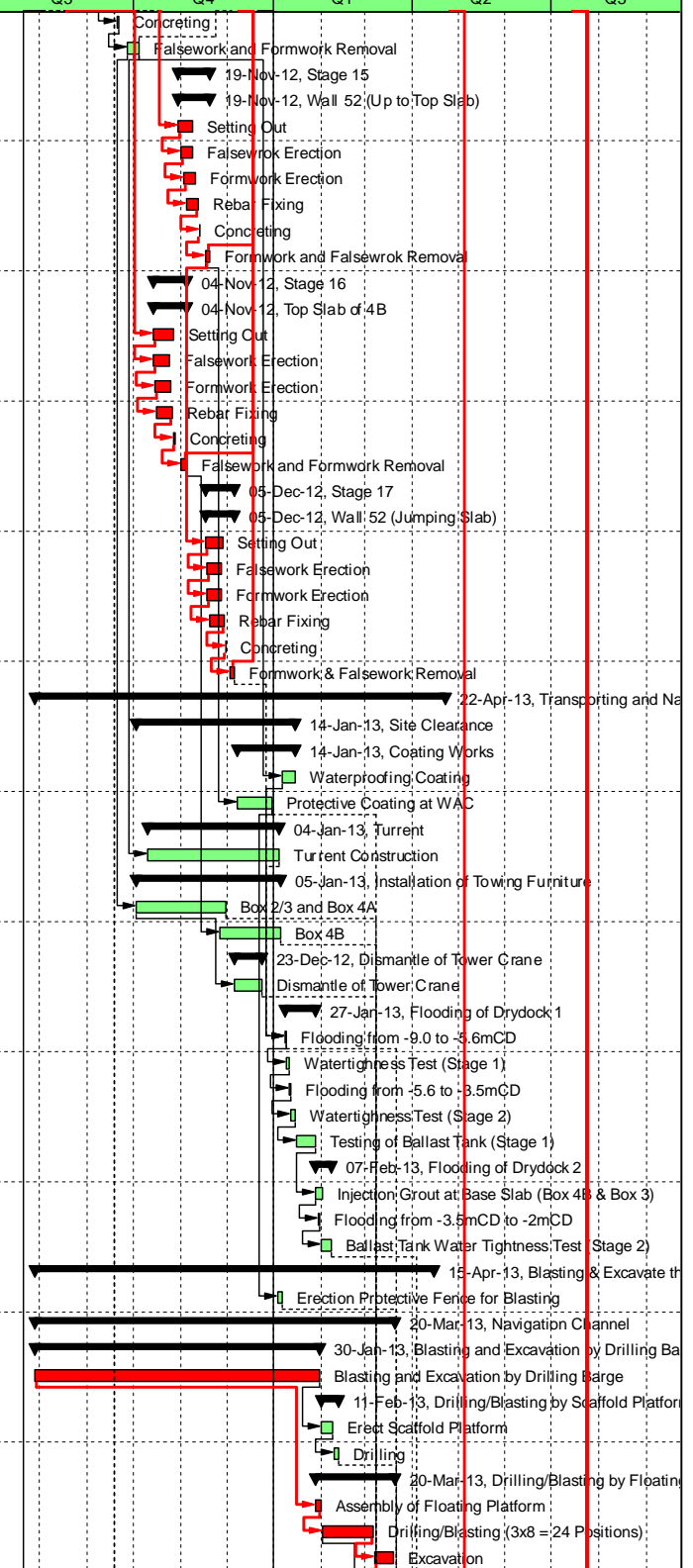


金門 - 利達聯營

Gammon - Leader Joint Venture



Activity ID	Activity Name	Original Duration	Start	Finish	Total Float	Predecessors	Successors	2011				2012				2013				
								Q1	Q2	Q3	Q4	Q1	Q2	Q3	Q4	Q1	Q2	Q3		
STG1450	Concreting	2	20-Sep-12	21-Sep-12	62	STG1440	STG1460													
STG1460	Falsework and Formwork Removal	8	27-Sep-12	04-Oct-12	62	STG1450	ITF3010, PP													
Stage 15		21	30-Oct-12	19-Nov-12	0															
Wall 52 (Up to Top Slab)		21	30-Oct-12	19-Nov-12	0															
STG1510	Setting Out	10	30-Oct-12	08-Nov-12	0	STG1050, STG1	STG1520													
STG1520	Falsework Erection	8	01-Nov-12	08-Nov-12	0	STG1510	STG1530													
STG1530	Formwork Erection	8	03-Nov-12	10-Nov-12	0	STG1520	STG1540													
STG1540	Rebar Fixing	8	05-Nov-12	12-Nov-12	0	STG1530	STG1550													
STG1550	Concreting	1	13-Nov-12	13-Nov-12	0	STG1540	STG1560													
STG1560	Formwork and Falsework Removal	3	17-Nov-12	19-Nov-12	0	STG1550	STG1710, C													
Stage 16		22	14-Oct-12	04-Nov-12	0															
Top Slab of 4B		22	14-Oct-12	04-Nov-12	0															
STG1610	Setting Out	14	14-Oct-12	27-Oct-12	0	STG1140	STG1620													
STG1620	Falsework Erection	11	14-Oct-12	24-Oct-12	0	STG1610	STG1630													
STG1630	Formwork Erection	11	15-Oct-12	25-Oct-12	0	STG1620	STG1640													
STG1640	Rebar Fixing	11	16-Oct-12	26-Oct-12	0	STG1630	STG1650													
STG1650	Concreting	2	27-Oct-12	28-Oct-12	0	STG1640	STG1660													
STG1660	Falsework and Formwork Removal	4	01-Nov-12	04-Nov-12	0	STG1650	PPC6000, IT													
Stage 17		19	17-Nov-12	05-Dec-12	0															
Wall 52 (Jumping Slab)		19	17-Nov-12	05-Dec-12	0															
STG1710	Setting Out	12	17-Nov-12	28-Nov-12	0	STG1560	STG1720													
STG1720	Falsework Erection	10	18-Nov-12	27-Nov-12	0	STG1710	STG1730													
STG1730	Formwork Erection	10	18-Nov-12	27-Nov-12	0	STG1720	STG1740													
STG1740	Rebar Fixing	10	20-Nov-12	29-Nov-12	0	STG1730	STG1750													
STG1750	Concreting	1	30-Nov-12	30-Nov-12	0	STG1740	STG1760													
STG1760	Formwork & Falsework Removal	3	03-Dec-12	05-Dec-12	0	STG1750	FOD6010, P													
Transporting and Navigating		268	29-Jul-12	22-Apr-13	0															
Site Clearance		104	03-Oct-12	14-Jan-13	67															
Coating Works		38	08-Dec-12	14-Jan-13	67															
CWW1000	Waterproofing Coating	9	06-Jan-13	14-Jan-13	62	STG1460	FOD6010													
CWW1010	Protective Coating at WAC	23	08-Dec-12	30-Dec-12	75	STG1560	BED3000, BI													
Turrent		87	10-Oct-12	04-Jan-13	70															
SCT2000	Turrent Construction	87	10-Oct-12	04-Jan-13	65	STG1460	FOD6010													
Installation of Towing Furniture		95	03-Oct-12	05-Jan-13	68															
ITF3010	Box 2/3 and Box 4A	59	03-Oct-12	30-Nov-12	82	STG1460	DTC4010, BI													
ITF3020	Box 4B	41	26-Nov-12	05-Jan-13	63	STG1660	BED3400													
Dismantle of Tower Crane		18	06-Dec-12	23-Dec-12	87															
DTC4010	Dismantle of Tower Crane	18	06-Dec-12	23-Dec-12	82	ITF3010	BED3400													
Flooding of Drydock 1		20	08-Jan-13	27-Jan-13	67															
FOD6010	Flooding from -9.0 to -5.6mCD	1	08-Jan-13	08-Jan-13	62	CWW1000, STG	PPU8000, F													
FOD6020	Watertightness Test (Stage 1)	2	09-Jan-13	10-Jan-13	62	FOD6010	FOD6030													
FOD6030	Flooding from -5.6 to -3.5mCD	1	11-Jan-13	11-Jan-13	62	FOD6020	FOD6040													
FOD6040	Watertightness Test (Stage 2)	3	12-Jan-13	14-Jan-13	62	FOD6030	FOD6050													
FOD6050	Testing of Ballast Tank (Stage 1)	13	15-Jan-13	27-Jan-13	62	FOD6040	FOD7010													
Flooding of Drydock 2		11	28-Jan-13	07-Feb-13	67															
FOD7010	Injection Grout at Base Slab (Box 4B & Box 3)	5	28-Jan-13	01-Feb-13	62	FOD6050	FOD7020													
FOD7020	Flooding from -3.5mCD to -2mCD	1	30-Jan-13	30-Jan-13	62	FOD7010	FOD7030													
FOD7030	Ballast Tank Water Tightness Test (Stage 2)	8	31-Jan-13	07-Feb-13	62	FOD7020	PPU8010													
Blasting & Excavate the Navigation and Dock Gate		261	29-Jul-12	15-Apr-13	0															
BED3000	Erection Protective Fence for Blasting	4	03-Jan-13	06-Jan-13	81	CWW1010	PPU8000													
Navigation Channel		235	29-Jul-12	20-Mar-13	13															
Blasting and Excavation by Drilling Barge		186	29-Jul-12	30-Jan-13	0															
BED3100	Blasting and Excavation by Drilling Barge	186	29-Jul-12*	30-Jan-13	0		BED3200, BI													
Drilling/Blasting by Scaffold Platform		12	31-Jan-13	11-Feb-13	50															
BED3200	Erect Scaffold Platform	9	31-Jan-13	08-Feb-13	45	BED3100	BED3210													
BED3210	Drilling	3	09-Feb-13	11-Feb-13	50	BED3200	PPU8000													
Drilling/Blasting by Floating Platform		52	28-Jan-13	20-Mar-13	9															
BED3300	Assembly of Floating Platform	4	28-Jan-13	31-Jan-13	0	BED3100	BED3310													
BED3310	Drilling/Blasting (3x8 = 24 Positions)	29	01-Feb-13	06-Mar-13	0	BED3300	BED3320, BI													
BED3320	Excavation	13	07-Mar-13	19-Mar-13	0	BED3310	BED3330													



	Date	Revision	Ch...	Approved
Actual Work	31-May-12	Rev. E	MF	KT
Remaining Work	23-Jun-12	Rev. F	MF	KT
Critical Remaining ...	19-Jul-12	Rev. G	MF	KT
Milestone	14-Aug-12	Rev. H	MF	KT
Summary	19-Sep-12	Rev. I	MF	KT
	21-Nov-12	Rev. J	MF	KT
	19-Feb-13	Rev. K	MF	KT
	05-Mar-13	Rev. L	MF	KT

Contract No.: HK/2010/06
Wan Chai Development Phase II-
Central-Wan Chai Bypass over MTR Tuen Wan Line
 (Works Programme - Rev. L)

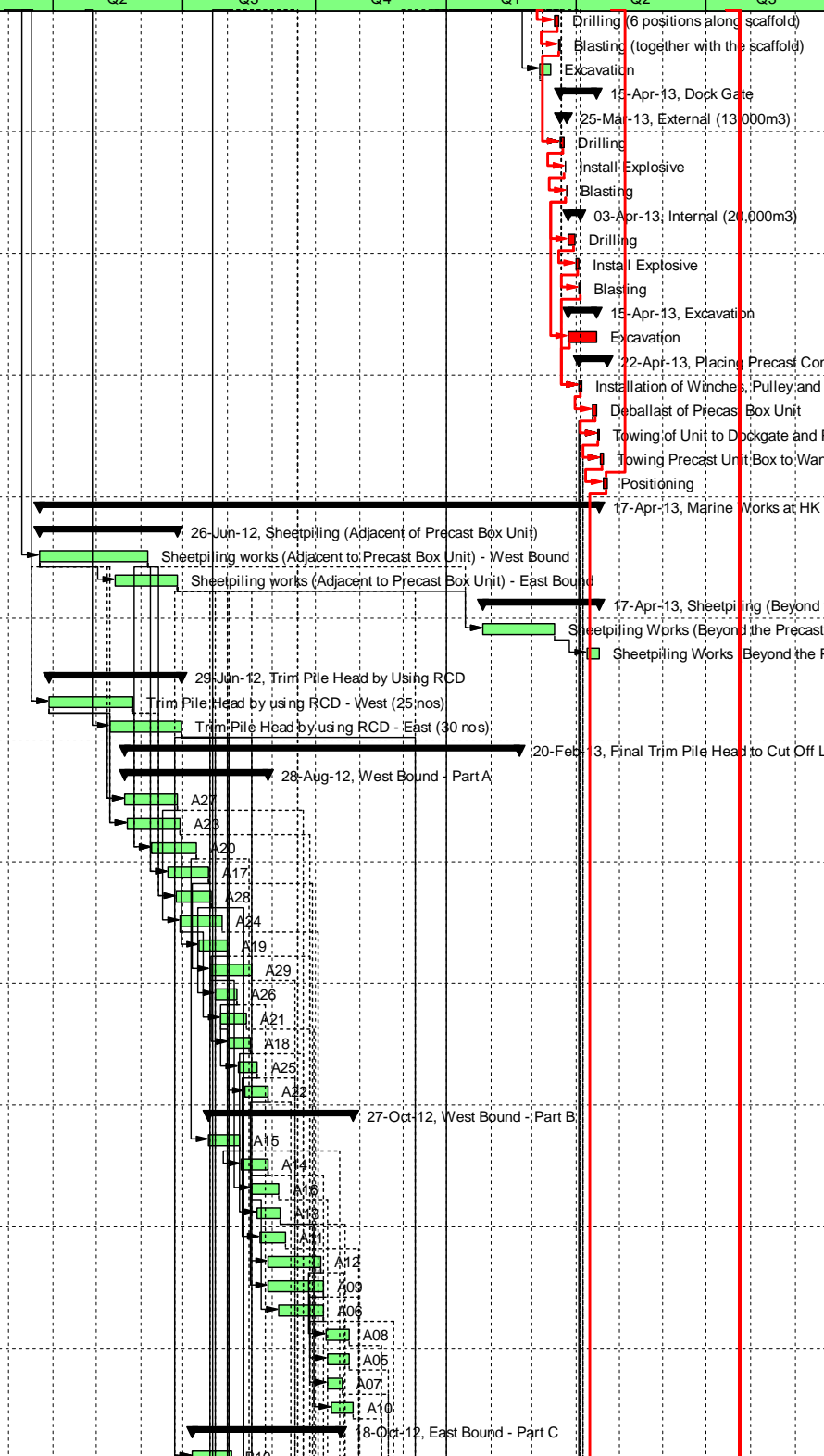


金門 - 利達聯營
Gammon - Leader Joint Venture



利達 LEADER

Activity ID	Activity Name	Original Duration	Start	Finish	Total Float	Predecessors	Successors	2011				2012				2013		
								Q1	Q2	Q3	Q4	Q1	Q2	Q3	Q4	Q1	Q2	Q3
BED3330	Drilling (6 positions along scaffold)	3	17-Mar-13	19-Mar-13	0	BED3320	BED3340											
BED3340	Blasting (together with the scaffold)	1	20-Mar-13	20-Mar-13	0	BED3330	BED3400											
BED3350	Excavation	9	06-Mar-13	14-Mar-13	15	BED3310	BED3400											
Dock Gate		26	21-Mar-13	15-Apr-13	0													
External (13,000m3)		5	21-Mar-13	25-Mar-13	0													
BED3400	Drilling	3	21-Mar-13	23-Mar-13	0	ITF3010, DTC40	BED3410											
BED3410	Install Explosive	1	24-Mar-13	24-Mar-13	0	BED3400	BED3420											
BED3420	Blasting	1	25-Mar-13	25-Mar-13	0	BED3410	BED3500, B1											
Internal (20,000m3)		9	26-Mar-13	03-Apr-13	0													
BED3500	Drilling	6	26-Mar-13	31-Mar-13	0	BED3420	BED3510											
BED3510	Install Explosive	2	01-Apr-13	02-Apr-13	0	BED3500	BED3520											
BED3520	Blasting	1	03-Apr-13	03-Apr-13	0	BED3510	PPU8000											
Excavation		21	26-Mar-13	15-Apr-13	0													
BED4000	Excavation	21	26-Mar-13	15-Apr-13	0	BED3420	PPU8000											
Placing Precast Combined Unit		20	03-Apr-13	22-Apr-13	0													
PPU8000	Installation of Winches, Pulley and Survey Tower at Box 4B top sl	2	03-Apr-13	04-Apr-13	0	FOD6010, BED3	PPU8005											
PPU8005	Deballast of Precast Box Unit	4	12-Apr-13	15-Apr-13	0	PPU8000	PPU8010, DI											
PPU8010	Towing of Unit to Dockgate and Preparation for Towing	2	16-Apr-13	17-Apr-13	0	PPU8005, FPP1	PPU8020											
PPU8020	Towing Precast Unit Box to Wan Chai	2	18-Apr-13	19-Apr-13	0	PPU8010, DRW	PPU8030											
PPU8030	Positioning	2	20-Apr-13	22-Apr-13	0	PPU8020	SSU9010, CI											
Marine Works at HK		392	22-Mar-12	17-Apr-13	108													
Sheetpiling (Adjacent of Precast Box Unit)		97	22-Mar-12	26-Jun-12	65													
PCW1800	Sheetpiling works (Adjacent to Precast Box Unit) - West Bound	59	22-Mar-12	05-Jun-12	55	WBC2320	PCW1810, V											
PCW1805	Sheetpiling works (Adjacent to Precast Box Unit) - East Bound	37	14-May-12	26-Jun-12	55	PCW1800	EBC3820, EI											
Sheetpiling (Beyond the Precast Box Unit)		82	26-Jan-13	17-Apr-13	108													
PCW1810	Sheetpiling Works (Beyond the Precast Box Unit) - (Eastern)	40	26-Jan-13	16-Mar-13	89	PCW1800, PCW	PCW1820											
PCW1820	Sheetpiling Works (Beyond the Precast Box Unit) - (Western)	9	08-Apr-13	17-Apr-13	89	PCW1810												
Trim Pile Head by Using RCD		93	29-Mar-12	29-Jun-12	80													
PCW1815	Trim Pile Head by using RCD - West (25 nos)	45	29-Mar-12	26-May-12	95	EBC2330, PCW1	WBA1820, V											
PCW1825	Trim Pile Head by using RCD - East (30 nos)	43	10-May-12	29-Jun-12	27	EBC2330	EBC3830, EI											
Final Trim Pile Head to Cut Off Level		276	21-May-12	20-Feb-13	50													
West Bound - Part A		100	21-May-12	28-Aug-12	118													
WBA1800	A27	31	21-May-12	26-Jun-12	95	PCW1815, PCW	WGA1860, V											
WBA1810	A23	31	23-May-12	28-Jun-12	97	PCW1800, PCW	WBA1860, V											
WBA1820	A20	24	09-Jun-12	09-Jul-12	94	PCW1815, PCW	WBB2810, V											
WBA1830	A17	23	20-Jun-12	18-Jul-12	107	PCW1800, PCW	WGA1900, V											
WBA1840	A28	21	26-Jun-12	20-Jul-12	71	PCW1815, PCW	WGA1800, V											
WBA1850	A24	25	28-Jun-12	27-Jul-12	95	WBA1800	WGA1920, V											
WBA1860	A19	17	12-Jul-12	31-Jul-12	97	WBA1810	WGA1880, V											
WBA1870	A29	26	19-Jul-12	17-Aug-12	107	WBA1830	WBB2830, V											
WBA1880	A26	14	23-Jul-12	07-Aug-12	98	WBA1840	WGA1820, V											
WBA1890	A21	15	27-Jul-12	13-Aug-12	95	WBA1850	WGA1910, V											
WBA1900	A18	14	01-Aug-12	16-Aug-12	97	WBA1860	WGA1870, V											
WBA1910	A25	12	08-Aug-12	21-Aug-12	104	WBA1880	WBB2850, V											
WBA1920	A22	14	13-Aug-12	28-Aug-12	95	WBA1890	WGA1830, V											
West Bound - Part B		102	18-Jul-12	27-Oct-12	125													
WBB2810	A15	20	18-Jul-12	09-Aug-12	94	WBA1820	WBB2820, V											
WBB2820	A14	16	10-Aug-12	28-Aug-12	94	WBB2810	WBB2860, V											
WBB2830	A16	17	17-Aug-12	05-Sep-12	107	WBA1870	WGB2810, V											
WBB2840	A13	15	21-Aug-12	06-Sep-12	97	WBA1900	WBB2920, V											
WBB2850	A11	16	23-Aug-12	10-Sep-12	121	WBA1910	WGB2860											
WBB2860	A12	30	29-Aug-12	04-Oct-12	94	WBB2820	WBB2890, V											
WBB2870	A09	32	29-Aug-12	06-Oct-12	100	WBA1920	WBB2900, V											
WBB2880	A06	26	05-Sep-12	06-Oct-12	107	WBB2830	WGB2910, V											
WBB2890	A08	14	08-Oct-12	24-Oct-12	100	WBB2860	WGB2870											
WBB2900	A05	13	09-Oct-12	24-Oct-12	104	WBB2870	WGB2890											
WBB2910	A07	10	09-Oct-12	19-Oct-12	107	WBB2880	WGB2900											
WBB2920	A10	13	12-Oct-12	27-Oct-12	97	WBB2840	WGB2880											
East Bound - Part C		104	07-Jul-12	18-Oct-12	102													
EBC3800	B10	24	07-Jul-12	03-Aug-12	75	PCW1825, PCW	EGC3900, E											



	Date	Revision	Ch...	Approved
Actual Work	31-May-12	Rev. E	MF	KT
Remaining Work	23-Jun-12	Rev. F	MF	KT
Critical Remaining ...	19-Jul-12	Rev. G	MF	KT
Milestone	14-Aug-12	Rev. H	MF	KT
Summary	19-Sep-12	Rev. I	MF	KT
	21-Nov-12	Rev. J	MF	KT
	19-Feb-13	Rev. K	MF	KT
	05-Mar-13	Rev. L	MF	KT

Contract No.: HK/2010/06
Wan Chai Development Phase II-
Central-Wan Chai Bypass over MTR Tuen Wan Line
 (Works Programme - Rev. L)

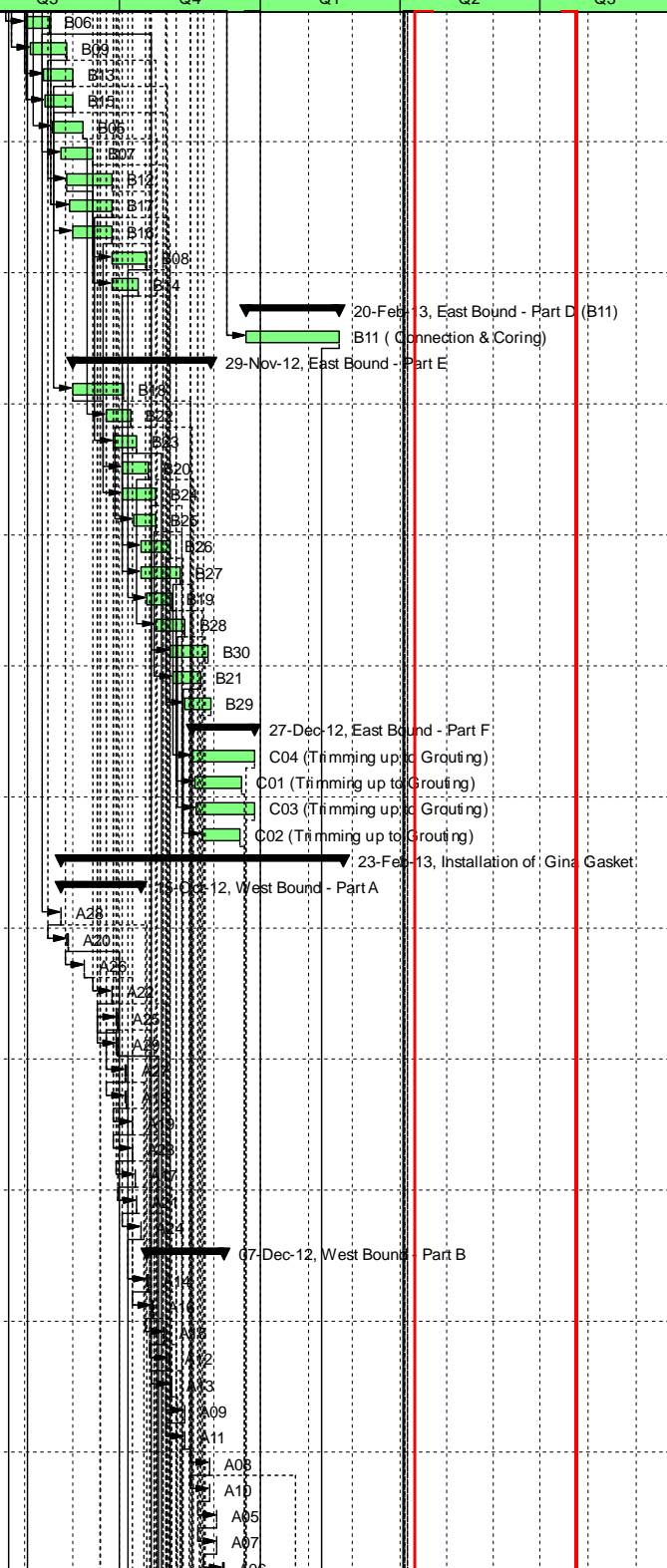


金門 - 利達聯營
Gammon - Leader Joint Venture



利達 LEADER

Activity ID	Activity Name	Original Duration	Start	Finish	Total Float	Predecessors	Successors	2011				2012				2013			
								Q1	Q2	Q3	Q4	Q1	Q2	Q3	Q4	Q1	Q2	Q3	
EBC3810	B06	15	31-Jul-12	16-Aug-12	27	PCW1825, PCW	EGC3800, E												
EBC3820	B09	20	04-Aug-12	27-Aug-12	62	PCW1805, PCW	EGC3810, E												
EBC3830	B13	17	13-Aug-12	31-Aug-12	66	PCW1825, PCW	EBC3890, E												
EBC3840	B15	16	14-Aug-12	31-Aug-12	84	PCW1805, PCW	EGC3840, E												
EBC3850	B05	18	18-Aug-12	07-Sep-12	75	EBC3800	EBE5010, E												
EBC3860	B07	18	24-Aug-12	13-Sep-12	49	EBC3810	EGC3850, E												
EBC3870	B12	26	28-Aug-12	26-Sep-12	62	EBC3820	EGC3830, E												
EBC3880	B17	24	30-Aug-12	26-Sep-12	65	PCW1805, PCW	EGC3870, E												
EBC3890	B16	22	01-Sep-12	26-Sep-12	66	EBC3830	EGC3890, E												
EBC3900	B08	18	26-Sep-12	18-Oct-12	49	EBC3860	EGC3880, E												
EBC3910	B14	14	26-Sep-12	13-Oct-12	87	EBC3870	EBE5060, E												
East Bound - Part D (B11)		61	22-Dec-12	20-Feb-13	48														
EBD4000	B11 (Connection & Coring)	46	22-Dec-12	20-Feb-13	37	PCW1825, PCW	EGC3920												
East Bound - Part E		90	01-Sep-12	29-Nov-12	109														
EBE5000	B18	26	01-Sep-12	03-Oct-12	88	EBC3840	EGD4050, E												
EBE5010	B22	12	22-Sep-12	08-Oct-12	86	EBC3850	EBE5050, E												
EBE5020	B23	12	27-Sep-12	12-Oct-12	82	EBC3880	EGD4000, E												
EBE5030	B20	15	03-Oct-12	19-Oct-12	82	EBC3890	EGD4080, E												
EBE5040	B24	18	03-Oct-12	24-Oct-12	88	EBE5000	EGD4010, E												
EBE5050	B25	12	10-Oct-12	24-Oct-12	86	EBE5010	EBE5110, E												
EBE5060	B26	16	15-Oct-12	02-Nov-12	87	EBC3910	EGD4030, E												
EBE5070	B27	22	15-Oct-12	09-Nov-12	82	EBE5020	EGD4070, E												
EBE5080	B19	13	19-Oct-12	03-Nov-12	86	EBC3900	EBE5140, E												
EBE5090	B28	17	24-Oct-12	12-Nov-12	82	EBE5030	EBE5150, E												
EBE5100	B30	21	03-Nov-12	27-Nov-12	88	EBE5040	EGD4090												
EBE5110	B21	16	05-Nov-12	22-Nov-12	86	EBE5050	EGD4040, E												
EBE5120	B29	16	12-Nov-12	29-Nov-12	87	EBE5060	EGD4100												
East Bound - Part F		41	17-Nov-12	27-Dec-12	105														
EBE5130	C04 (Trimming up to Grouting)	33	17-Nov-12	27-Dec-12	82	EBE5070	ECE6540												
EBE5140	C01 (Trimming up to Grouting)	27	19-Nov-12	19-Dec-12	86	EBE5080	ECE6510												
EBE5150	C03 (Trimming up to Grouting)	31	20-Nov-12	27-Dec-12	82	EBE5090	ECE6530												
EBE5160	C02 (Trimming up to Grouting)	21	24-Nov-12	18-Dec-12	87	EBE5110	ECE6520												
Installation of Gina Gasket		184	24-Aug-12	23-Feb-13	48														
West Bound - Part A		53	24-Aug-12	15-Oct-12	87														
WGA1800	A28	1	24-Aug-12	24-Aug-12	71	WBA1840	WGA1810, V												
WGA1810	A20	1	28-Aug-12	28-Aug-12	71	WBA1820, WGA	WCA2000, V												
WGA1820	A26	1	08-Sep-12	08-Sep-12	71	WBA1880, WGA	WGA1830, V												
WGA1830	A22	1	26-Sep-12	26-Sep-12	71	WBA1920, WGA	WGA1850, V												
WGA1840	A25	1	29-Sep-12	29-Sep-12	71	WGA1850, WBA	WCA2060, V												
WGA1850	A29	1	29-Sep-12	29-Sep-12	71	WGA1830, WBA	WGA1840, V												
WGA1860	A27	1	05-Oct-12	05-Oct-12	71	WBA1800, WGA	WCA2020, V												
WGA1870	A18	1	05-Oct-12	05-Oct-12	71	WBA1900, WGA	WCA2100, V												
WGA1880	A19	1	09-Oct-12	09-Oct-12	71	WBA1860, WGA	WGA1890, V												
WGA1890	A23	1	09-Oct-12	09-Oct-12	71	WGA1880, WBA	WGA1900, V												
WGA1900	A17	1	11-Oct-12	11-Oct-12	71	WGA1890, WBA	WGA1910, V												
WGA1910	A21	1	12-Oct-12	12-Oct-12	71	WGA1900, WBA	WCA2080, V												
WGA1920	A24	1	15-Oct-12	15-Oct-12	71	WBA1850, WGA	WCA2050, V												
West Bound - Part B		50	19-Oct-12	07-Dec-12	90														
WGB2800	A14	1	19-Oct-12	19-Oct-12	71	WBB2820, WGA	WGB2810, V												
WGB2810	A16	1	22-Oct-12	22-Oct-12	71	WBB2830, WGB	WGB2820, V												
WGB2820	A15	1	30-Oct-12	30-Oct-12	71	WGB2810, WBB	WCD4020, V												
WGB2830	A12	1	02-Nov-12	02-Nov-12	71	WGB2820, WBB	WCD4040, V												
WGB2840	A13	1	03-Nov-12	03-Nov-12	71	WBB2840, WGB	WGB2850, V												
WGB2850	A09	1	12-Nov-12	12-Nov-12	71	WGB2840, WBB	WGB2860												
WGB2860	A11	1	12-Nov-12	12-Nov-12	71	WBB2850, WGB	WGB2870, V												
WGB2870	A08	1	28-Nov-12	28-Nov-12	71	WGB2860, WBB	WGB2880, F												
WGB2880	A10	1	28-Nov-12	28-Nov-12	71	WGB2870, WBB	WGB2890												
WGB2890	A05	1	03-Dec-12	03-Dec-12	71	WBB2900, WGB	WGB2900												
WGB2900	A07	1	03-Dec-12	03-Dec-12	71	WGB2890, WBB	WGB2910												
WGB2910	A06	1	07-Dec-12	07-Dec-12	71	WBB2880, WGB	RBP1010												



█	Actual Work
█	Remaining Work
█	Critical Remaining ...
◆	Milestone
→	Summary

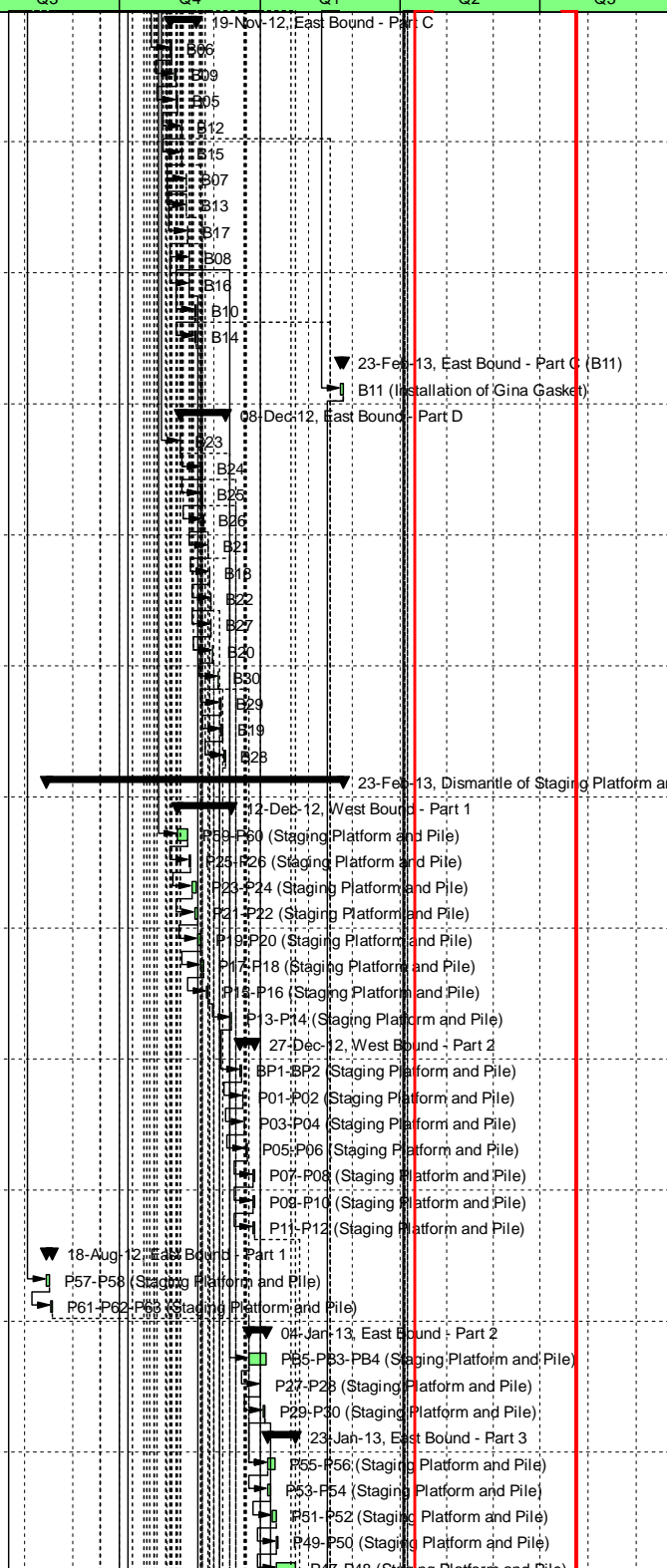
Date	Revision	Ch...	Approved
31-May-12	Rev. E	MF	KT
23-Jun-12	Rev. F	MF	KT
19-Jul-12	Rev. G	MF	KT
14-Aug-12	Rev. H	MF	KT
19-Sep-12	Rev. I	MF	KT
21-Nov-12	Rev. J	MF	KT
19-Feb-13	Rev. K	MF	KT
05-Mar-13	Rev. L	MF	KT

Contract No.: HK/2010/06
Wan Chai Development Phase II-
Central-Wan Chai Bypass over MTR Tuen Wan Line
 (Works Programme - Rev. L)

金門 - 利達聯營
Gammon - Leader Joint Venture

利達 LEADER

Activity ID	Activity Name	Original Duration	Start	Finish	Total Float	Predecessors	Successors	2011				2012				2013			
								Q1	Q2	Q3	Q4	Q1	Q2	Q3	Q4	Q1	Q2	Q3	
East Bound - Part C																			
EGC3800	B06	1	03-Nov-12	03-Nov-12	113		EGC3810												
EGC3810	B09	1	06-Nov-12	06-Nov-12	27	EBC3810	EGC3820												
EGC3820	B05	1	07-Nov-12	07-Nov-12	27	EGC3810, EBC3	EGC3830												
EGC3830	B12	1	10-Nov-12	10-Nov-12	27	EGC3820, EBC3	RBP2080, E												
EGC3840	B15	1	10-Nov-12	10-Nov-12	27	EBC3840, EGC3	EGC3860, E												
EGC3850	B07	1	13-Nov-12	13-Nov-12	27	EGC3860, EBC3	EGC3870												
EGC3860	B13	1	13-Nov-12	13-Nov-12	27	EGC3840, EBC3	EGC3850, E												
EGC3870	B17	1	14-Nov-12	14-Nov-12	27	EGC3850, EBC3	ECC5030, E												
EGC3880	B08	1	15-Nov-12	15-Nov-12	27	EGC3890, EBC3	EGC3900, E												
EGC3890	B16	1	15-Nov-12	15-Nov-12	27	EBC3890, EGC3	EGC3880, E												
EGC3900	B10	1	19-Nov-12	19-Nov-12	91	EBC3800, EGC3	EGC3910, R												
EGC3910	B14	1	19-Nov-12	19-Nov-12	91	EGC3900, EBC3	ECC5010												
East Bound - Part C (B11)																			
EGC3920	B11 (Installation of Gina Gasket)	3	21-Feb-13	23-Feb-13	48														
East Bound - Part D																			
EGD4000	B23	1	09-Nov-12	09-Nov-12	83	EBE5020	EGD4010, E												
EGD4010	B24	1	23-Nov-12	23-Nov-12	83	EBE5040, EGD4	EGD4020, E												
EGD4020	B25	1	23-Nov-12	23-Nov-12	83	EGD4010, EBE5	EGD4030, E												
EGD4030	B26	1	24-Nov-12	24-Nov-12	83	EBE5060, EGD4	ECE6000, E												
EGD4040	B21	1	27-Nov-12	27-Nov-12	83	EBE5110, EGD4	EGD4050, E												
EGD4050	B18	1	28-Nov-12	28-Nov-12	83	EGD4040, EBE5	EGD4060, E												
EGD4060	B22	1	29-Nov-12	29-Nov-12	83	EBE5010, EGD4	EGD4070, E												
EGD4070	B27	1	29-Nov-12	29-Nov-12	83	EBE5070, EGD4	ECE6010, E												
EGD4080	B20	1	30-Nov-12	30-Nov-12	83	EBE5030, EGD4	EGD4090, E												
EGD4090	B30	1	04-Dec-12	04-Dec-12	83	EBE5100, EGD4	EGD4100, E												
EGD4100	B29	1	05-Dec-12	05-Dec-12	83	EGD4090, EBE5	ECE6050, E												
EGD4110	B19	1	06-Dec-12	06-Dec-12	83	EBE5080, EGD4	EGD4120, E												
EGD4120	B28	1	08-Dec-12	08-Dec-12	84	EBE5090, EGD4	ECE6060												
Dismantle of Staging Platform and Pile																			
West Bound - Part 1																			
WSPA1000	P59-P60 (Staging Platform and Pile)	6	08-Nov-12	14-Nov-12	105	WGA1850	WSPA1010												
WSPA1010	P25-P26 (Staging Platform and Pile)	2	15-Nov-12	16-Nov-12	84	WSPA1000	WSPA1020												
WSPA1020	P23-P24 (Staging Platform and Pile)	2	17-Nov-12	19-Nov-12	84	WSPA1010	WSPA1030												
WSPA1030	P21-P22 (Staging Platform and Pile)	2	19-Nov-12	20-Nov-12	84	WSPA1020	WSPA1040												
WSPA1040	P19-P20 (Staging Platform and Pile)	2	21-Nov-12	22-Nov-12	84	WSPA1030	WSPA1050												
WSPA1050	P17-P18 (Staging Platform and Pile)	2	23-Nov-12	24-Nov-12	84	WSPA1040	WSPA1060												
WSPA1060	P15-P16 (Staging Platform and Pile)	2	26-Nov-12	27-Nov-12	84	WSPA1050	WSPC2070												
WSPC2070	P13-P14 (Staging Platform and Pile)	1	12-Dec-12	12-Dec-12	84	WSPA1060	WSPC2000												
West Bound - Part 2																			
WSPC2000	BP1-BP2 (Staging Platform and Pile)	2	18-Dec-12	19-Dec-12	84	WSPC2070	WSPC2010												
WSPC2010	P01-P02 (Staging Platform and Pile)	1	20-Dec-12	20-Dec-12	84	WSPC2000	WSPC2020												
WSPC2020	P03-P04 (Staging Platform and Pile)	1	21-Dec-12	21-Dec-12	84	WSPC2010	WSPC2030												
WSPC2030	P05-P06 (Staging Platform and Pile)	1	22-Dec-12	22-Dec-12	84	WSPC2020	WSPC2040												
WSPC2040	P07-P08 (Staging Platform and Pile)	1	27-Dec-12	27-Dec-12	84	WSPC2030	WSPC2050												
WSPC2050	P09-P10 (Staging Platform and Pile)	1	27-Dec-12	27-Dec-12	84	WSPC2040	WSPC2060												
WSPC2060	P11-P12 (Staging Platform and Pile)	1	27-Dec-12	27-Dec-12	84	WSPC2050	DRW1520												
East Bound - Part 1																			
ESPD3000	P57-P58 (Staging Platform and Pile)	2	15-Aug-12	16-Aug-12	173	EBC3800	ESPD3100												
ESPD3100	P61-P62-P63 (Staging Platform and Pile)	2	17-Aug-12	18-Aug-12	173	ESPD3000	ESPD4000												
East Bound - Part 2																			
ESPB3070	PB5-PB3-PB4 (Staging Platform and Pile)	8	24-Dec-12	04-Jan-13	27	EGC3880	ESPB3080												
ESPB3080	P27-P28 (Staging Platform and Pile)	1	31-Dec-12	31-Dec-12	27	ESPB3070	ESPB3090												
ESPB3090	P29-P30 (Staging Platform and Pile)	2	02-Jan-13	03-Jan-13	27	ESPB3080	ESPD4000, I												
East Bound - Part 3																			
ESPD4000	P55-P56 (Staging Platform and Pile)	4	05-Jan-13	09-Jan-13	60	ESPD3100, EGD	ESPD4010												
ESPD4010	P53-P54 (Staging Platform and Pile)	2	05-Jan-13	07-Jan-13	60	ESPD4000	ESPD4020												
ESPD4020	P51-P52 (Staging Platform and Pile)	3	08-Jan-13	10-Jan-13	60	ESPD4010	ESPD4030												
ESPD4030	P49-P50 (Staging Platform and Pile)	1	11-Jan-13	11-Jan-13	60	ESPD4020	ESPD4040												
ESPD4040	P47-P48 (Staging Platform and Pile)	11	11-Jan-13	23-Jan-13	60	ESPD4030	ESPD4050												



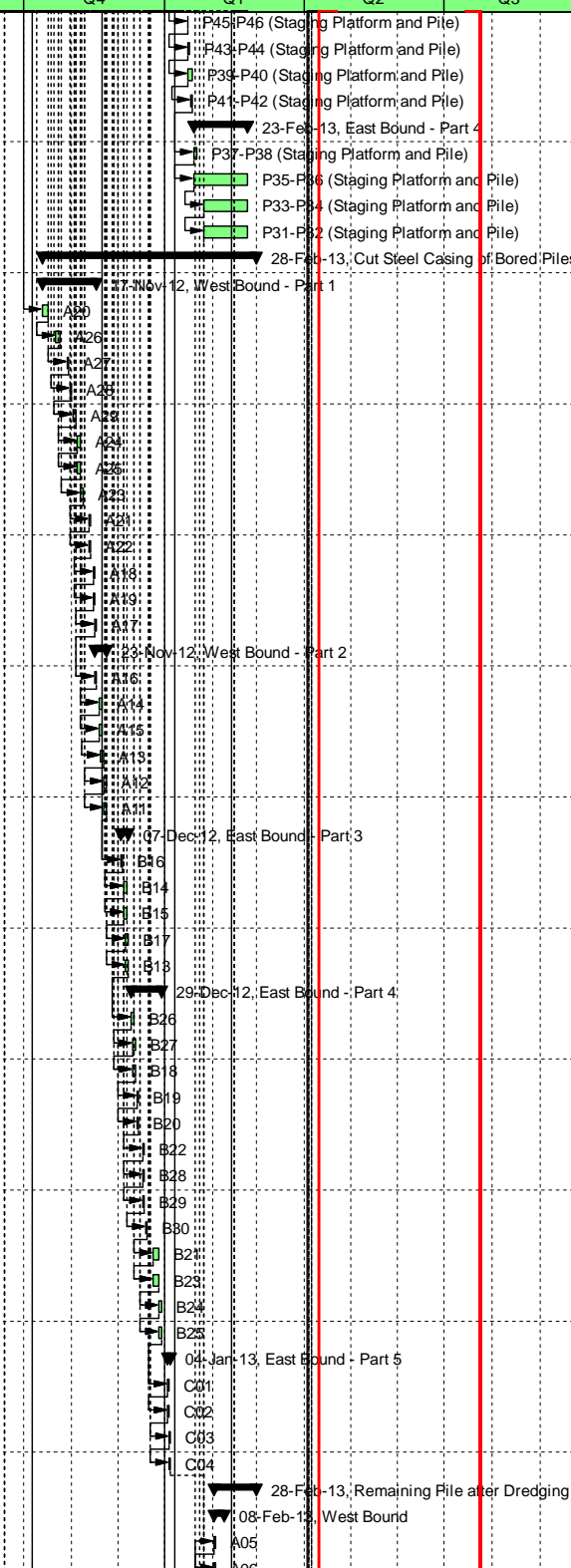
	Date	Revision	Ch...	Approved
Actual Work	31-May-12	Rev. E	MF	KT
Remaining Work	23-Jun-12	Rev. F	MF	KT
Critical Remaining ...	19-Jul-12	Rev. G	MF	KT
Milestone	14-Aug-12	Rev. H	MF	KT
Summary	19-Sep-12	Rev. I	MF	KT
	21-Nov-12	Rev. J	MF	KT
	19-Feb-13	Rev. K	MF	KT
	05-Mar-13	Rev. L	MF	KT

Contract No.: HK/2010/06
Wan Chai Development Phase II-
Central-Wan Chai Bypass over MTR Tuen Wan Line
 (Works Programme - Rev. L)

金門 - 利達聯營

Gammon - Leader Joint Venture

Activity ID	Activity Name	Original Duration	Start	Finish	Total Float	Predecessors	Successors	2011				2012				2013			
								Q1	Q2	Q3	Q4	Q1	Q2	Q3	Q4	Q1	Q2	Q3	
ESPD4050	P45-P46 (Staging Platform and Pile)	1	15-Jan-13	15-Jan-13	60	ESPD4040	ESPD4060												
ESPD4060	P43-P44 (Staging Platform and Pile)	2	15-Jan-13	16-Jan-13	60	ESPD4050	ESPD4070												
ESPD4070	P39-P40 (Staging Platform and Pile)	4	15-Jan-13	18-Jan-13	60	ESPD4060	ESPD4080												
ESPD4080	P41-P42 (Staging Platform and Pile)	2	17-Jan-13	18-Jan-13	60	ESPD4070	ESPB3000												
East Bound - Part 4		36	19-Jan-13	23-Feb-13	76														
ESPB3000	P37-P38 (Staging Platform and Pile)	2	19-Jan-13	21-Jan-13	60	ESPD4080	ESPB3010												
ESPB3010	P35-P36 (Staging Platform and Pile)	28	19-Jan-13	23-Feb-13	60	ESPB3000	ESPB3020												
ESPB3020	P33-P34 (Staging Platform and Pile)	22	26-Jan-13	23-Feb-13	60	ESPB3010	ESPB3030												
ESPB3030	P31-P32 (Staging Platform and Pile)	22	26-Jan-13	23-Feb-13	60	ESPB3020	DRW1520												
Cut Steel Casing of Bored Piles		139	13-Oct-12	28-Feb-13	48														
West Bound - Part 1		36	13-Oct-12	17-Nov-12	98														
WCA2000	A20	3	13-Oct-12	16-Oct-12	78	WGA1810	WCA2010												
WCA2010	A26	2	22-Oct-12	24-Oct-12	78	WGA1820, WCA	WCA2020												
WCA2020	A27	2	29-Oct-12	30-Oct-12	78	WGA1860, WCA	WCA2030												
WCA2030	A28	2	31-Oct-12	01-Nov-12	78	WCA2020, WGA	WCA2040												
WCA2040	A29	2	02-Nov-12	03-Nov-12	78	WGA1850, WCA	WCA2050												
WCA2050	A24	2	05-Nov-12	06-Nov-12	78	WGA1920, WCA	WCA2060												
WCA2060	A25	2	05-Nov-12	06-Nov-12	78	WCA2050, WGA	WCA2070												
WCA2070	A23	2	07-Nov-12	08-Nov-12	78	WCA2060, WGA	WCA2080												
WCA2080	A21	2	12-Nov-12	13-Nov-12	78	WGA1910, WCA	WCA2090												
WCA2090	A22	2	12-Nov-12	13-Nov-12	78	WGA1830, WCA	WCA2100												
WCA2100	A18	2	15-Nov-12	16-Nov-12	78	WGA1870, WCA	WCA2110												
WCA2110	A19	2	15-Nov-12	16-Nov-12	78	WCA2100, WGA	WCA2120												
WCA2120	A17	2	16-Nov-12	17-Nov-12	78	WCA2110, WGA	WCD4000												
West Bound - Part 2		8	16-Nov-12	23-Nov-12	98														
WCD4000	A16	2	16-Nov-12	17-Nov-12	78	WGB2810, WCA	WCD4010												
WCD4010	A14	2	19-Nov-12	20-Nov-12	78	WCD4000, WGE	WCD4020												
WCD4020	A15	2	19-Nov-12	20-Nov-12	78	WGB2820, WCE	WCD4030												
WCD4030	A13	2	20-Nov-12	21-Nov-12	78	WCD4020, WGE	WCD4040												
WCD4040	A12	2	22-Nov-12	23-Nov-12	78	WCD4030, WGE	WCD4050												
WCD4050	A11	2	22-Nov-12	23-Nov-12	78	WCD4040, WGE	ECC5000												
East Bound - Part 3		5	03-Dec-12	07-Dec-12	98														
ECC5000	B16	2	03-Dec-12	04-Dec-12	78	EGC3890, WCD	ECC5010												
ECC5010	B14	2	05-Dec-12	06-Dec-12	78	ECC5000, EGC3	ECC5020												
ECC5020	B15	2	05-Dec-12	06-Dec-12	78	EGC3840, ECC5	ECC5030												
ECC5030	B17	2	06-Dec-12	07-Dec-12	78	ECC5020, EGC3	ECC5040												
ECC5040	B13	2	06-Dec-12	07-Dec-12	78	EGC3860, ECC5	ECE6000												
East Bound - Part 4		20	10-Dec-12	29-Dec-12	101														
ECE6000	B26	2	10-Dec-12	11-Dec-12	78	EGD4030, ECC5	ECE6010												
ECE6010	B27	2	11-Dec-12	12-Dec-12	78	EGD4070, ECE6	ECE6020												
ECE6020	B18	2	11-Dec-12	12-Dec-12	78	EGD4050, ECE6	ECE6030												
ECE6030	B19	2	13-Dec-12	14-Dec-12	78	EGD4110, ECE6	ECE6040												
ECE6040	B20	2	13-Dec-12	14-Dec-12	78	EGD4080, ECE6	ECE6050												
ECE6050	B22	2	17-Dec-12	18-Dec-12	78	EGD4100, ECE6	ECE6060												
ECE6060	B28	2	17-Dec-12	18-Dec-12	78	EGD4120, ECE6	ECE6070												
ECE6070	B29	2	17-Dec-12	18-Dec-12	78	EGD4060, ECE6	ECE6080												
ECE6080	B30	2	19-Dec-12	20-Dec-12	78	EGD4090, ECE6	ECE6090												
ECE6090	B21	2	24-Dec-12	27-Dec-12	78	EGD4040, ECE6	ECE6100												
ECE6100	B23	2	24-Dec-12	27-Dec-12	78	EGD4000, ECE6	ECE6110												
ECE6110	B24	2	28-Dec-12	29-Dec-12	78	EGD4010, ECE6	ECE6120												
ECE6120	B25	2	28-Dec-12	29-Dec-12	78	EGD4020, ECE6	ECE6510												
East Bound - Part 5		3	02-Jan-13	04-Jan-13	99														
ECE6510	C01	2	02-Jan-13	03-Jan-13	78	EBE5140, ECE6	ECE6520												
ECE6520	C02	2	02-Jan-13	03-Jan-13	78	EBE5160, ECE6	ECE6530												
ECE6530	C03	2	03-Jan-13	04-Jan-13	78	EBE5150, ECE6	ECE6540												
ECE6540	C04	2	03-Jan-13	04-Jan-13	78	EBE5130, ECE6	DRW1520												
Remaining Pile after Dredging		28	01-Feb-13	28-Feb-13	48														
West Bound		8	01-Feb-13	08-Feb-13	35														
RBP1000	A05	2	01-Feb-13	02-Feb-13	27	DRW1515	RBP1010												
RBP1010	A06	2	01-Feb-13	02-Feb-13	27	WGB2910, RBP	RBP1020												



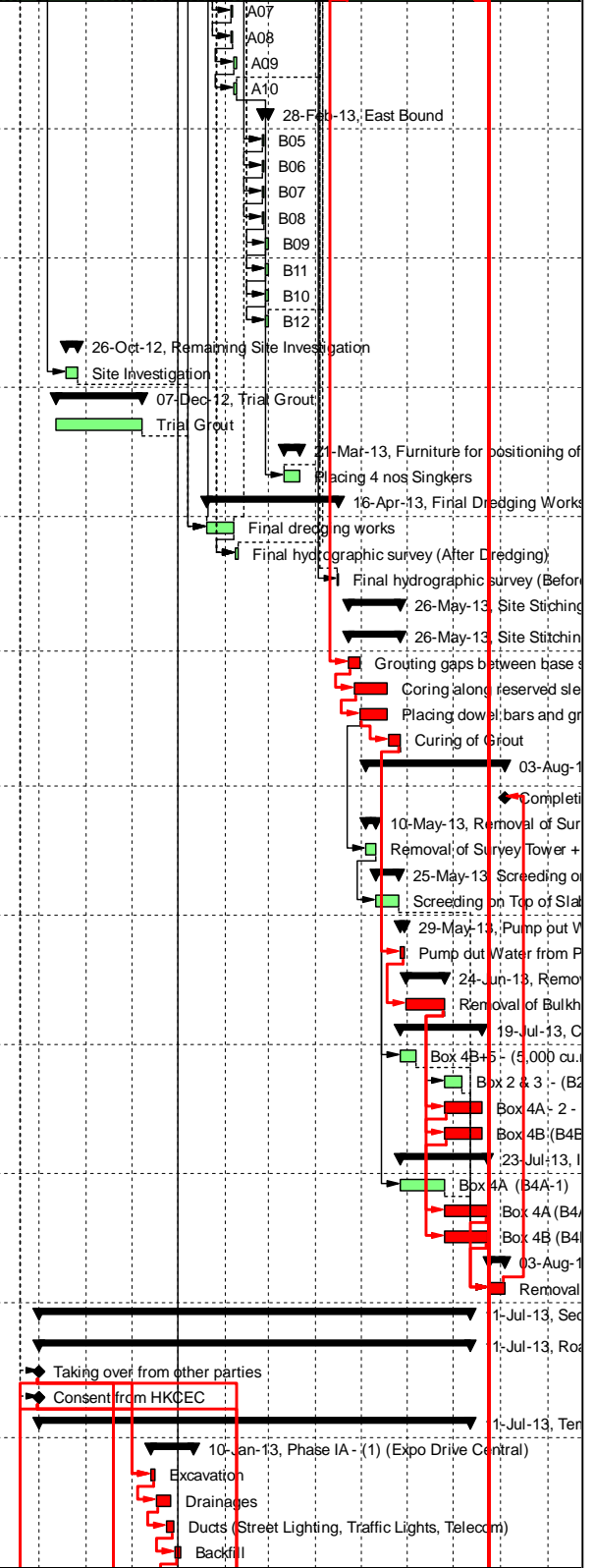
	Date	Revision	Ch...	Approved
Actual Work	31-May-12	Rev. E	MF	KT
Remaining Work	23-Jun-12	Rev. F	MF	KT
Critical Remaining ...	19-Jul-12	Rev. G	MF	KT
Milestone	14-Aug-12	Rev. H	MF	KT
Summary	19-Sep-12	Rev. I	MF	KT
	21-Nov-12	Rev. J	MF	KT
	19-Feb-13	Rev. K	MF	KT
	05-Mar-13	Rev. L	MF	KT

Contract No.: HK/2010/06
Wan Chai Development Phase II-
Central-Wan Chai Bypass over MTR Tuen Wan Line
 (Works Programme - Rev. L)

金門 - 利達聯營

Gammon - Leader Joint Venture

Activity ID	Activity Name	Original Duration	Start	Finish	Total Float	Predecessors	Successors	2011				2012				2013		
								Q1	Q2	Q3	Q4	Q1	Q2	Q3	Q4	Q1	Q2	Q3
RBP1020	A07	2	04-Feb-13	05-Feb-13	27	RBP1010	RBP1030											
RBP1030	A08	2	04-Feb-13	05-Feb-13	27	WGB2870, RBP1010	RBP1040											
RBP1040	A09	3	06-Feb-13	08-Feb-13	27	RBP1030	RBP1050											
RBP1050	A10	3	06-Feb-13	08-Feb-13	27	RBP1040	FPP1515, PF											
East Bound		4	25-Feb-13	28-Feb-13	48													
RBP2000	B05	2	25-Feb-13	26-Feb-13	37	DRW1515, EGC	RBP2010											
RBP2010	B06	2	25-Feb-13	26-Feb-13	37	RBP2000	RBP2030											
RBP2030	B07	2	25-Feb-13	26-Feb-13	37	RBP2010	RBP2040											
RBP2040	B08	2	25-Feb-13	26-Feb-13	37	RBP2030	RBP2050											
RBP2050	B09	2	27-Feb-13	28-Feb-13	37	RBP2040	RBP2060											
RBP2060	B11	2	27-Feb-13	28-Feb-13	37	EGC3920, RBP2050	RBP2070											
RBP2070	B10	2	27-Feb-13	28-Feb-13	37	EGC3900, RBP2060	RBP2080											
RBP2080	B12	2	27-Feb-13	28-Feb-13	37	EGC3830, RBP2070	PPU8020											
Remaining Site Investigation		8	19-Oct-12	26-Oct-12	119													
RSI6000	Site Investigation	6	19-Oct-12	26-Oct-12	96	WGA1850	DRW1515											
Trial Grout		57	12-Oct-12	07-Dec-12	77													
TGR6500	Trial Grout	48	12-Oct-12*	07-Dec-12	60		DRW1515											
Furniture for positioning of precast unit		11	11-Mar-13	21-Mar-13	36													
FPP1515	Placing 4 nos Singlers	10	11-Mar-13	21-Mar-13	27	RBP1050	PPU8010											
Final Dredging Works		88	19-Jan-13	16-Apr-13	1													
DRW1515	Final dredging works	16	19-Jan-13	06-Feb-13	27	TGR6500, RSI6000	DRW1520, F											
DRW1520	Final hydrographic survey (After Dredging)	3	07-Feb-13	09-Feb-13	50	DRW1515, ESPE	PPU8020											
DRW1530	Final hydrographic survey (Before Positioning of Precast Box Unit)	2	15-Apr-13	16-Apr-13	1	PPU8005	PPU8010											
Site Sticking of Precast Box Unit		34	23-Apr-13	26-May-13	0													
Site Sticking Precast Combined Unit		34	23-Apr-13	26-May-13	0													
SSU9010	Grouting gaps between base slab and bored piles within the gash	7	23-Apr-13	30-Apr-13	0	PPU8030	SSU9020											
SSU9020	Coring along reserved sleeve pipe to bored piles (816nos.)	18	26-Apr-13	18-May-13	0	SSU9010	SSU9030											
SSU9030	Placing dowel bars and grouting works (816nos.)	15	30-Apr-13	18-May-13	0	SSU9020	SSU9040, M											
SSU9040	Curing of Grout	8	19-May-13	26-May-13	0	SSU9030	MPU10600, I											
Minor Outstanding Works inside Precast Box Unit after Sticking		92	04-May-13	03-Aug-13	0													
MWP1100	Completion of Outstanding Works inside Precast Box Unit after S	0		03-Aug-13*	0	MPU10900												
Removal of Survey Tower + Towing Furniture		7	04-May-13	10-May-13	60													
MPU10100	Removal of Survey Tower + Towing Furniture	6	04-May-13	10-May-13	48	SSU9030	MPU10200											
Screeding on Top of Slab		15	11-May-13	25-May-13	59													
MPU10200	Screeding on Top of Slab	12	11-May-13	25-May-13	48	MPU10100	MPU10900											
Pump out Water from Pre-cast Box Unit		3	27-May-13	29-May-13	0													
MPU10300	Pump out Water from Pre-cast Box Unit	3	27-May-13	29-May-13	0	SSU9040	MPU10400											
Removal of Bulkheads		26	30-May-13	24-Jun-13	0													
MPU10400	Removal of Bulkheads	21	30-May-13	24-Jun-13	0	MPU10300	MPU10510, I											
Construction of Drain Pipes, Profile Barriers, Foam Concrete and Infill Concrete		54	27-May-13	19-Jul-13	4													
MPU10500	Box 4B+5 - (5,000 cu.m) (Foam Concrete)	10	27-May-13	06-Jun-13	38	SSU9040	MPU10900											
MPU10510	Box 2 & 3 - (B2-1/B2-2/B3) (5,000 cu.m) (Foam Concrete)	10	25-Jun-13	06-Jul-13	14	MPU10400	MPU10900											
MPU10520	Box 4A - 2 - (4BA-2) (Concrete Infill)	21	25-Jun-13	19-Jul-13	0	MPU10400	MPU10620											
MPU10530	Box 4B (B4B-1/B4B-2) (Concrete Infill)	21	25-Jun-13	19-Jul-13	0	MPU10400	MPU10630											
Intermediate Slab		58	27-May-13	23-Jul-13	0													
MPU10600	Box 4A (B4A-1)	24	27-May-13	24-Jun-13	24	SSU9040	MPU10900											
MPU10620	Box 4A (B4A-2)	24	25-Jun-13	23-Jul-13	0	MPU10520	MPU10900											
MPU10630	Box 4B (B4B-1)	24	25-Jun-13	23-Jul-13	0	MPU10530	MPU10900											
Removal of Turrets		11	24-Jul-13	03-Aug-13	0													
MPU10900	Removal of Turrets	10	24-Jul-13	03-Aug-13	0	MPU10510, MPL	MWP1100											
Section II		284	01-Oct-12	11-Jul-13	0													
Road Works		284	01-Oct-12	11-Jul-13	0													
TAR8000	Taking over from other parties	0	01-Oct-12*		0	CNO1010	P1A1000, P1											
TAR8010	Consent from HKCEC	0	01-Oct-12*		0	CNO1010	P1A1000, P1											
Temporary Access Road at HKCEC West Bridge		284	01-Oct-12	11-Jul-13	0													
Phase IA - (1) (Expo Drive Central)		29	13-Dec-12	10-Jan-13	0													
P1A1000	Excavation	4	13-Dec-12	16-Dec-12	0	TAR8000, TAR8010	P1A1010											
P1A1010	Drainages	10	17-Dec-12	26-Dec-12	0	P1A1000	P1A1020											
P1A1020	Ducts (Street Lighting, Traffic Lights, Telecom)	5	24-Dec-12	28-Dec-12	0	P1A1010	P1A1030											
P1A1030	Backfill	5	29-Dec-12	02-Jan-13	0	P1A1020	P1A1040											








	Date	Revision	Ch...	Approved
Actual Work	31-May-12	Rev. E	MF	KT
Remaining Work	23-Jun-12	Rev. F	MF	KT
Critical Remaining ...	19-Jul-12	Rev. G	MF	KT
Milestone	14-Aug-12	Rev. H	MF	KT
Summary	19-Sep-12	Rev. I	MF	KT
	21-Nov-12	Rev. J	MF	KT
	19-Feb-13	Rev. K	MF	KT
	05-Mar-13	Rev. L	MF	KT

Contract No.: HK/2010/06
Wan Chai Development Phase II-
Central-Wan Chai Bypass over MTR Tuen Wan Line
 (Works Programme - Rev. L)

金門 - 利達聯營

Gammon - Leader Joint Venture

Activity ID	Activity Name	Original Duration	Start	Finish	Total Float	Predecessors	Successors	2011				2012				2013		
								Q1	Q2	Q3	Q4	Q1	Q2	Q3	Q4	Q1	Q2	Q3
P1A1040	Subbase, Kerb	6	01-Jan-13	06-Jan-13	0	P1A1030	P1A1050											
P1A1050	Surfacing	4	07-Jan-13	10-Jan-13	0	P1A1040	P1A1200											
Phase II A		30	11-Jan-13	09-Feb-13	0													
P1A1200	Excavation	7	11-Jan-13	17-Jan-13	0	P1A1050	P1A1210											
P1A1210	Drainages	10	15-Jan-13	24-Jan-13	0	P1A1200	P1A1220											
P1A1220	Ducts (Street Lighting, Traffic Lights, Telecom)	10	22-Jan-13	31-Jan-13	0	P1A1210	P1A1230											
P1A1230	Backfill	7	29-Jan-13	04-Feb-13	0	P1A1220	P1A1240											
P1A1240	Subbase, Kerb	6	02-Feb-13	07-Feb-13	0	P1A1230	P1A1250											
P1A1250	Surfacing	4	06-Feb-13	09-Feb-13	0	P1A1240	P1A2060											
Phase IA - (2) (Expo Drive Central)		29	10-Feb-13	10-Mar-13	0													
P1A2060	Excavation	4	10-Feb-13	13-Feb-13	0	P1A1250	P1A2070											
P1A2070	Drainages	10	14-Feb-13	23-Feb-13	0	P1A2060	P1A2080											
P1A2080	Ducts (Street Lighting, Traffic Lights)	5	21-Feb-13	25-Feb-13	0	P1A2070	P1A2090											
P1A2090	Backfill	5	26-Feb-13	02-Mar-13	0	P1A2080	P1A2100											
P1A2100	Subbase, Kerb	6	01-Mar-13	06-Mar-13	0	P1A2090	P1A2110											
P1A2110	Surfacing	4	07-Mar-13	10-Mar-13	0	P1A2100	P1B2000											
Phase IB (Expo Drive)		30	11-Mar-13	09-Apr-13	0													
P1B2000	Excavation	5	11-Mar-13	15-Mar-13	0	P1A2110	P1B2010											
P1B2010	Drainages	7	16-Mar-13	22-Mar-13	0	P1B2000	P1B2020											
P1B2020	Ducts (Street Lighting, Traffic Lights)	7	20-Mar-13	26-Mar-13	0	P1B2010	P1B2030											
P1B2030	Backfill	4	27-Mar-13	30-Mar-13	0	P1B2020	P1B2040											
P1B2040	Subbase, Kerb	10	31-Mar-13	09-Apr-13	0	P1B2030	P1B2050											
P1B2050	Surfacing	6	04-Apr-13	09-Apr-13	0	P1B2040	P2B2100											
Phase II B (1)		28	10-Apr-13	07-May-13	0													
P2B2100	Excavation	7	10-Apr-13	16-Apr-13	0	P1B2050	P2B2110											
P2B2110	Ducts (Street Lighting, Traffic Lights)	10	14-Apr-13	23-Apr-13	0	P2B2100	P2B2120											
P2B2120	Kerb	6	24-Apr-13	29-Apr-13	0	P2B2110	P2B2130											
P2B2130	Footway	8	30-Apr-13	07-May-13	0	P2B2120	P2B2200											
Phase II B (2)		25	08-May-13	01-Jun-13	0													
P2B2200	Excavation	10	08-May-13	17-May-13	0	P2B2130	P2B2210											
P2B2210	Ducts (Street Lighting, Traffic Lights)	11	13-May-13	23-May-13	0	P2B2200	P2B2220											
P2B2220	Backfill	7	18-May-13	24-May-13	0	P2B2210	P2B2230											
P2B2230	Subbase, Kerb	10	23-May-13	01-Jun-13	0	P2B2220	P2B2240											
P2B2240	Surfacing	4	28-May-13	31-May-13	0	P2B2230	P3B3000											
Phase III B		27	01-Jun-13	27-Jun-13	0													
P3B3000	Excavation	7	01-Jun-13	07-Jun-13	0	P2B2240	P3B3010											
P3B3010	Ducts (Street Lighting, Traffic Lights)	10	08-Jun-13	17-Jun-13	0	P3B3000	P3B3020											
P3B3020	Backfill	7	18-Jun-13	24-Jun-13	0	P3B3010	P3B3030											
P3B3030	Subbase	7	21-Jun-13	27-Jun-13	0	P3B3020	P3B3040											
P3B3040	Surfacing	4	24-Jun-13	27-Jun-13	0	P3B3030	CNO1030											
Phase IC (Convention Avenue)		100	20-Feb-13	30-May-13	0													
P1C4000	Excavation	7	20-Feb-13	26-Feb-13	0	TAR8000, TAR8000	P1C4010											
P1C4010	Drainages	18	24-Feb-13	13-Mar-13	0	P1C4000	P1C4020											
P1C4020	Ducts (Street Lighting, Traffic Lights)	21	06-Mar-13	26-Mar-13	0	P1C4010	P1C4030, M1											
P1C4030	Sewerage	21	06-Mar-13	26-Mar-13	0	P1C4020	P1C4040											
P1C4040	Fresh Water Main	21	11-Mar-13	31-Mar-13	0	P1C4030	P1C4050											
P1C4050	HEC Duct	21	11-Mar-13	31-Mar-13	0	P1C4040	P1C4060, M1											
P1C4060	Telecom Duct	21	11-Mar-13	31-Mar-13	0	P1C4050	P1C4070, M1											
P1C4070	Backfill	14	21-Mar-13	03-Apr-13	0	P1C4060	P1C4080											
P1C4080	Subbase, Kerb	12	28-Mar-13	08-Apr-13	0	P1C4070	P1C4090, P2											
P1C4090	Surfacing	4	27-May-13	30-May-13	0	P1C4080, MSW1	CNO1030											
Phase II C (Convention Avenue)		38	13-Apr-13	20-May-13	0													
P2C4100	Excavation	7	13-Apr-13	19-Apr-13	0	P1C4080	P2C4110											
P2C4110	Drainages	14	18-Apr-13	01-May-13	0	P2C4100	P2C4120, P2											
P2C4120	Duct (Traffic Light)	5	27-Apr-13	01-May-13	7	P2C4110	P2C4150											
P2C4130	Sewerage	21	18-Apr-13	08-May-13	0	P2C4110	P2C4140											
P2C4140	Fresh Water Main	21	18-Apr-13	08-May-13	0	P2C4130	P2C4150											
P2C4150	Backfill	4	09-May-13	12-May-13	0	P2C4140, P2C41	P2C4160											
P2C4160	Subbase	4	13-May-13	16-May-13	0	P2C4150	P2C4170											
P2C4170	Surfacing	4	17-May-13	20-May-13	0	P2C4160	P3C4200											

	Actual Work
	Remaining Work
	Critical Remaining ...
	Milestone
	Summary

Date	Revision	Ch...	Approved
31-May-12	Rev. E	MF	KT
23-Jun-12	Rev. F	MF	KT
19-Jul-12	Rev. G	MF	KT
14-Aug-12	Rev. H	MF	KT
19-Sep-12	Rev. I	MF	KT
21-Nov-12	Rev. J	MF	KT
19-Feb-13	Rev. K	MF	KT
05-Mar-13	Rev. L	MF	KT

Contract No.: HK/2010/06
Wan Chai Development Phase II-
Central-Wan Chai Bypass over MTR Tuen Wan Line
 (Works Programme - Rev. L)



金門 - 利達聯營

Gammon - Leader Joint Venture



Activity ID	Activity Name	Rem Dur	Start	Finish	2013																	2014						
					November							December							January			February						
					21	28	04	11	18	25	02	09	16	23	30	06	13	20	27	03	10	17						
3MRP - Nov 2013 to Feb 2013																												
02 - PRE-CONSTRUCTION WORKS																												
02.3 - Method Statement / Shop Drawings																												
0230-1580	MS Bridge F1A/F2A Int. Noise Semi Enclosure - Submission	28	16-Dec-13	12-Jan-14																								
0230-1590	MS Bridge F1A/F2A Int. Noise Semi Enclosure - ER Review / Comment	18	13-Jan-14	30-Jan-14																								
0230-1600	MS Bridge F1A/F2A Int. Noise Semi Enclosure - Resubmission	18	31-Jan-14	17-Feb-14																								
0230-1610	MS Bridge F1A/F2A Int. Noise Semi Enclosure - No Adverse Comment	18	18-Feb-14	07-Mar-14																								
0230-1930	MS Marine Temp Pile Removal - No Adverse Comment	2	18-Sep-13 A	21-Nov-13																								
0230-1940	MS Beam Erection D1 to E2 - Submission	28	06-Jan-14*	02-Feb-14																								
0230-1950	MS Beam Erection D1 to E2 - Comment/Resubmission	30	03-Feb-14	04-Mar-14																								
0230-1372	MS Segment Erection by Crane - Submission	0	20-Sep-13 A	15-Nov-13 A																								
0230-1374	MS Segment Erection by Crane - Comment/Resubmission	12	16-Nov-13 A	01-Dec-13																								
0230-1376	MS Segment Erection by Crane - No Adverse Comment	12	02-Dec-13	13-Dec-13																								
0230-2010	MS EVB ELS - Comment/Resubmission	0	20-Oct-13 A	31-Oct-13 A																								
0230-2020	MS EVB ELS - No Adverse Comment	0	01-Nov-13 A	12-Nov-13 A																								
0230-2030	MS Beam Erection F8 to F15 - Submission	28	16-Dec-13*	12-Jan-14																								
0230-2040	MS Beam Erection F8 to F15 - Review/Comment	15	13-Jan-14	27-Jan-14																								
0230-2050	MS Beam Erection F8 to F15 - Resubmission	15	28-Jan-14	11-Feb-14																								
0230-2060	MS Beam Erection F8 to F15 - No Adverse Comment	15	12-Feb-14	26-Feb-14																								
0230-2070	MS ADB Pre-bored H-pile - Resubmission	6	21-Oct-13 A	25-Nov-13																								
0230-2080	MS ADB Pre-bored H-pile - No Adverse Comment	15	26-Nov-13	10-Dec-13																								
0230-1420	MS Noise Barrier - Submission	28	16-Dec-13	12-Jan-14																								
0230-1430	MS Permanent Noise Barrier - ER Review & Comment	18	13-Jan-14	30-Jan-14																								
0230-1440	MS Permanent Noise Barrier - Resubmission	18	31-Jan-14	17-Feb-14																								
0230-1450	MS Permanent Noise Barrier - No Adverse Comment	18	18-Feb-14	07-Mar-14																								
0230-1780	MS Temporary Bridge TD - Submission	28	03-Feb-14*	02-Mar-14																								
02.4 - Contractor's Design and Build Items																												
0240-1041	Temp Bridge "TD" Design - Submission	48	01-Mar-13 A	06-Jan-14																								
0240-1042	Temp Bridge "TD" Design - ER review and comment	24	07-Jan-14	30-Jan-14																								
0240-1043	Temp Bridge "TD" Design - Resubmission	30	31-Jan-14	01-Mar-14																								
0240-1105	Int. Noise Enclosure Structural Design - Submission	12	20-Mar-13 A	01-Dec-13																								
0240-1110	Int. Noise Enclosure Structural Design - ER Review/Resubmission	28	02-Dec-13	29-Dec-13																								
0240-1112	Int. Noise Enclosure Structural Design - No Adverse Comment	28	30-Dec-13	26-Jan-14																								
0240-1113	Int. Noise Enclosure Structural - Shop Drawings Bridge F1A/F2A	60	27-Jan-14	27-Mar-14																								
0240-1127	Noise Barrier Structural Design - ER Review/Resubmission	6	30-May-13 A	25-Nov-13																								
0240-1131	Noise Barrier - Procurement/Sub-contractor	26	01-Nov-13 A	15-Dec-13																								
0240-1128	Noise Barrier Structural Design - No Adverse Comment	28	26-Nov-13	23-Dec-13																								
0240-1132	Noise Barrier Structural - Shop Drawings	90	16-Dec-13	15-Mar-14																								
0240-1133	Noise Barrier Structural - Fabrication/Delivery	120	15-Jan-14	14-May-14																								
0240-1134	Noise Barrier Panel - Submission	36	16-Dec-13	20-Jan-14																								
0240-1136	Noise Barrier Panel - Design ER Review/Resubmission	28	21-Jan-14	17-Feb-14																								
0240-1137	Noise Barrier Panel - Design No Adverse Comment	28	18-Feb-14	17-Mar-14																								
0240-1138	Noise Barrier Panel - Fabrication Delivery	90	18-Feb-14	18-May-14																								
0240-1141	Noise Barrier Green Wall - Design Submission	60	15-Jan-14	15-Mar-14																								

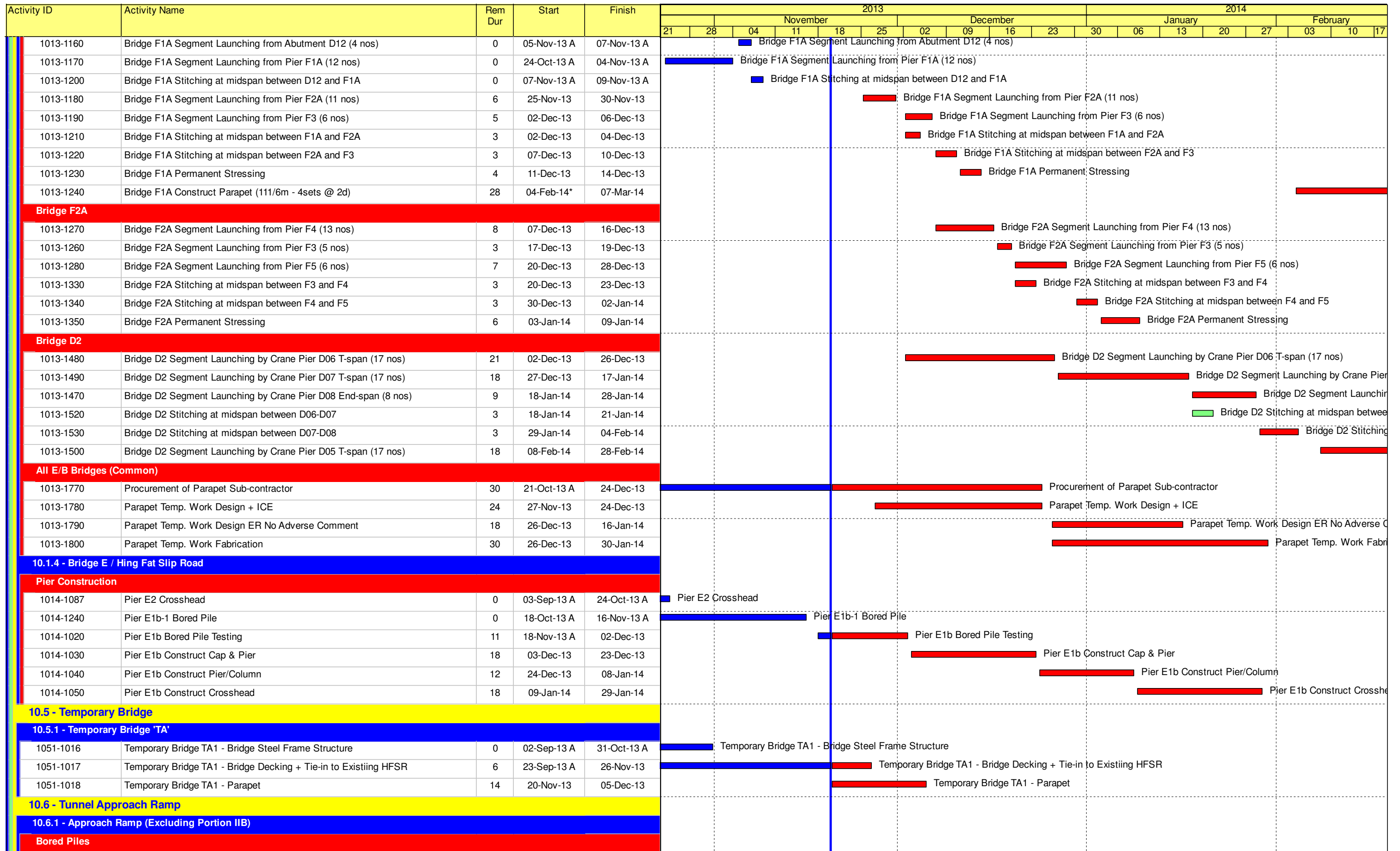
- Remaining Level of Effort
- Actual Level of Effort
- Actual Work
- Remaining Work
- Critical Remaining Work
- ◆ Milestone

Contract HY/2009/19

Three Month Rolling Programme (20 Nov 2013 to 19 Feb 2013)

3MRP

3MRP - Nov 2013 to Feb 2013



- Remaining Level of Effort
- Actual Level of Effort
- Actual Work
- Remaining Work
- Critical Remaining Work
- ◆ Milestone







Contract HY/2009/19

Three Month Rolling Programme (20 Nov 2013 to 19 Feb 2013)

3MRP

3MRP - Nov 2013 to Feb 2013

Activity ID	Activity Name	Rem Dur	Start	Finish	2013												2014				
					November						December						January			February	
					21	28	04	11	18	25	02	09	16	23	30	06	13	20	27	03	10
1061-1580	Bored Pile Ramp - BN07	9	25-Oct-13 A	29-Nov-13	Actual Work						Remaining Work										
1061-1661	Bored Pile Ramp - BM40	12	03-Oct-13 A	03-Dec-13	Actual Work						Remaining Work										
1061-1670	Remaining Pre-drilling for Approach Ramp Bored Piles	42	19-Jul-13 A	09-Jan-14	Actual Work						Remaining Work										
1061-1680	Bored Pile Ramp - BM42	18	04-Dec-13	24-Dec-13							Remaining Work										
1061-1690	Bored Pile Ramp - BM39	18	26-Dec-13	16-Jan-14							Remaining Work										
1061-1700	Bored Pile Ramp - BM43	18	17-Jan-14	10-Feb-14							Remaining Work										
1061-1710	Bored Pile Ramp - BM40	18	11-Feb-14	03-Mar-14							Remaining Work										

-  Remaining Level of Effort
-  Actual Level of Effort
-  Actual Work
-  Remaining Work
-  Critical Remaining Work
-  Milestone

Contract HY/2009/19

Three Month Rolling Programme (20 Nov 2013 to 19 Feb 2013)

3MRP
 3MRP - Nov 2013 to Feb 2013
 Page 8 of 8

Activity ID	Activity Name	Original Duration	Start	Finish	2013		2014			
					Nov	Dec	Jan	Feb	Mar	
HY/2010/08: CWB-SR8 Three Months Rolling Programme_updated up to 20131120										
Works in TS3										
TS3 East & West Reclamation Works										
TS3E - Reclamation (Advance Works)										
TS3E.MW.1010	Commence Advance Marine Works	0	04-Nov-13 A		◆ Commence Advance Marine Works					
TS3E.MW.1020	TS3E North - Dredging Works (Type 3)	18	04-Nov-13 A	23-Nov-13	■ TS3E North - Dredging Works;(Type 3)					
TS3E.MW.1025	TS3E North - Dredging Works (Type 1 & 2)	41	02-Dec-13	21-Jan-14	■ TS3E North - Dredging Works (Type 1 & 2)					
TS3E.MW.1030	TS3E North - Rockfill + Levelling Works	13	22-Jan-14	08-Feb-14	■ TS3E North - Rockfill + Levelling Works					
TS3E.MW.1050	C15 - Relocate Vessels	9	10-Feb-14	19-Feb-14	■ C15 - Relocate Vessels					
TS3E.MW.1060	C15 - Dredging at Temporary Mooring Area	18	20-Feb-14	12-Mar-14	■ C15 - Dredging at Temporary Mooring Area					
Works in SR8 (Open Cut Method)										
SR8 - Cofferdam & Cut & Cover Tunnel Works										
SR8 East Bound - (Seaside to Victoria Road / IEC Central Divider)										
TTA Stage 0 - East Bound										
Stage 0A - East Bound (Seaside) (Ref. DRG. No.CDD/SR8/081)										
SR8.EB.0150	Ground Pre-treatment works at Seawall Part 1	12	31-Oct-13 A	13-Nov-13 A	■ Ground Pre-treatment works at Seawall Part 1					
Stage 0B - East Bound (Seaside) (Ref. DRG. No. CDD/SR8/081)										
SR8.EB.0210	Implement TTM (DRG REF. 4843/012/030)	0	14-Nov-13 A		◆ Implement TTM (DRG REF. 4843/012/030)					
SR8.EB.0220	Ground Pre-Treatment works at Seawall Part 2	6	14-Nov-13 A	20-Nov-13	■ Ground Pre-Treatment works at Seawall Part 2					
SR8.EB.0230	Construct Proposed Walkway and Install Pipe for Water Main	12	16-Nov-13 A	29-Nov-13	■ Construct Proposed Walkway and Install Pipe for Water Main					
SR8.EB.0240	Demolish Island / Construct & Relocate New Bus Stop (West of Footbridge)	24	16-Nov-13 A	13-Dec-13	■ Demolish Island / Construct & Relocate New Bus Stop (West of Footbridge)					
Stage 1A - East Bound (Seaside) (Ref. DRG. No.CDD/SR8/082)										
SR8.EB.1140	Construction of ADMS at Seaside Planter	44	24-Oct-13 A	13-Jan-14	■ Construction of ADMS at Seaside Planter					
SR8.EB.1010	Implement TTM (Divert Pedestrian to Proposed Walkway)	0		29-Nov-13	◆ Implement TTM (Divert Pedestrian to Proposed Walkway)					
SR8.EB.1020	Carry out Pre-Boring Work for Stage 1A Sheet Pile	12	30-Nov-13	13-Dec-13	■ Carry out Pre-Boring Work for Stage 1A Sheet Pile					
SR8.EB.1030	Carry out Stage 1A Sheet Pile Work	15	07-Dec-13	24-Dec-13	■ Carry out Stage 1A Sheet Pile Work					
SR8.EB.1040	Carry out Stage 1A Pipe Piling Work	28	27-Dec-13	29-Jan-14	■ Carry out Stage 1A Pipe Piling Work					
SR8.EB.1050	Carry out Stage 1A TAM Grout	10	30-Jan-14	13-Feb-14	■ Carry out Stage 1A TAM Grout					
SR8.EB.1060	Trim down the Sheet Pile and Pipe Pile and construct the Gas Main Trough	6	10-Feb-14	15-Feb-14	■ Trim down the Sheet Pile and Pipe Pile and construct the Gas Main Trough					
SR8.EB.1070	Divert the Water Main to Seaside	12	13-Feb-14	26-Feb-14	■ Divert the Water Main to Seaside					
SR8.EB.1090	Trim down the Sheet Pile/Pipe Pile and Divert HEC Cable (11kv) to completed Pipe pile	6	17-Feb-14	22-Feb-14	■ Trim down the Sheet Pile/Pipe Pile and Divert HEC Cable (11kv) to completed Pipe pile					
SR8.EB.1100	Pre- Laying of One Gas Main Pipe to Gas Trough for diversion at Stage 2	6	17-Feb-14	22-Feb-14	■ Pre- Laying of One Gas Main Pipe to Gas Trough for diversion at Stage 2					
SR8.EB.1080	Divert Gas Main from Foot Path to Gas Main Trough	12	17-Feb-14	01-Mar-14	■ Divert Gas Main from Foot Path to Gas Main Trough					
SR8.EB.1110	Shift wiring and Relocation of Lamp Post	6	24-Feb-14	01-Mar-14	■ Shift wiring and Relocation of Lamp Post					

- Actual Work
- Remaining Work
- Critical Remaining Work
- ◆ Milestone

Date	Revision	Checked	Approved
27-Nov-13	Updated to 20th Nov 2013	DML/WC	

Activity ID	Activity Name	Original Duration	Start	Finish	2013					2014					
					Nov		Dec			Jan		Feb			Mar
VP_1090	CP - Footings / Foundation Works	12	29-Nov-13	12-Dec-13											
VP_1100	CP - Base Slab	12	13-Dec-13	28-Dec-13											
VP_1690	CP - Kerbs and Planters	12	30-Dec-13	13-Jan-14											
VP_1140	CP - Lighting System	18	07-Jan-14	27-Jan-14											
VP_1200	CP - Install Play Equipment	18	28-Jan-14	20-Feb-14											
VP_1230	CP - Install Safety Matting	12	14-Feb-14	27-Feb-14											
VP_1160	CP - Completion of KD4 - Works in Section1B	0		27-Feb-14											◆ CP - Co
Bowling Green Office															
BGO - Construction Works															
VP_1110	BGO - Site Possession, Portion VI & XI (245d)	0	21-Nov-13												◆ BGO - Site Possession, Portion VI & XI (245d)
VP_1100.01	BGO - hoarding erection	24	22-Nov-13	19-Dec-13											
VP_1100.02	BGO - site clearance	24	20-Dec-13	20-Jan-14											
VP_1150	BGO - Underground utilities & foundation works	36	21-Jan-14	06-Mar-14											
Tree Transplanting at Portion XIV (Victoria Park Open Space)															
VP_1040	Tree Transplanting & Upkeep at Portion XIV	347	16-Oct-13 A	13-Dec-14											
Mooring Components Upkeep (CBTS and ATS)															
MAR_2000	Mooring Upkeep at Portion XIX(19) & XX(20) - ATS (if instructed by Engineer)	1399	21-Mar-13 A	17-Jan-17											
Works for Public Works Regional Laboratory (North Lantau)															
Maintenance and Upkeep of New PWRL (Portion XVII)															
PWRL_1050	Maintenance/ Upkeep of New PWRL	1301	19-Jul-13 A	20-Nov-17											
Demolition of Existing PWRL (Portion XVIII)															
PWRL_1060	Demolition of Existing PWRL & Reinstatement works	49	17-Sep-13 A	15-Nov-13 A											
PWRL_1070	Completion of KD16 - Completion of Section 10A	0		15-Nov-13 A											◆ Completion of KD16 - Completion of Section 10A

- Actual Work
- Remaining Work
- Critical Remaining Work
- Milestone

Date	Revision	Checked	Approved
27-Nov-13	Updated to 20th Nov 2013	DML/WC	